



March 21, 2019

Mr. Todd Nichols, Superintendent
Cuyahoga Falls City School District – Summit County
431 Stow Avenue
Cuyahoga Falls, OH 44221

Dear Superintendent Nichols:

Per your acceptance dated March 20, 2019, the draft report dated March 19, 2019 has been finalized and submitted to the Ohio Facilities Construction Commission. Enclosed is the final report.

The master plan year is the 2023-24 school year with an enrollment of 4,739 students.

**Cuyahoga Falls City School District
Master Planning Year Projected Enrollment**

Grade	2023-24
Pre-K - 12 Total	4,469
Ungraded	21
Career Tech Comprehensive - Low Bay	91
Career Tech Comprehensive - High Bay	8
Career Tech Off-Site	78
Career Tech On-Site - Low Bay	65
Career Tech On-Site - High Bay	7
Total	4,739

Source: FutureThink

We appreciate the opportunity to serve Cuyahoga Falls City Schools.

Sincerely,

Tracy V. Healy
President



FutureThink

Formerly DeJONG-HEALY

FINAL REPORT



OHIO FACILITIES CONSTRUCTION COMMISSION

Cuyahoga Falls City School District

Summit County

Enrollment Projections

March 21, 2019

Cuyahoga Falls City School District

INTRODUCTION

Based on a request from the Ohio Facilities Construction Commission, **FutureThink** was contracted to develop enrollment projections for the Cuyahoga Falls City School District.

This report contains ten-year enrollment projections, which were developed for the Cuyahoga Falls City School District by analyzing the following data:

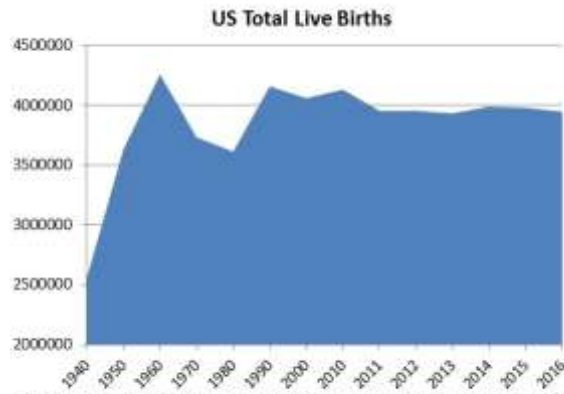
- ▶ Live birth data
- ▶ Historical enrollment
- ▶ Community school enrollment
- ▶ Open enrollment
- ▶ Community demographics
- ▶ Housing information

The projections presented in this report are meant to serve as a planning tool for the future and represent the most likely direction of the District.

Cuyahoga Falls City School District

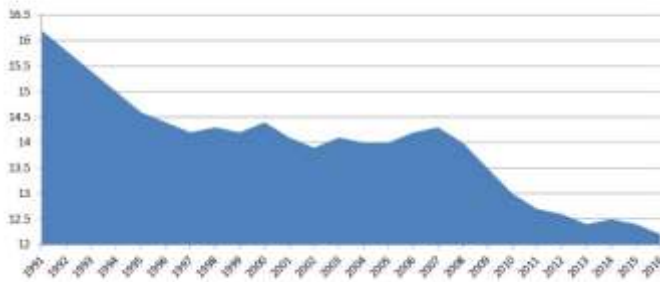
NATIONAL & OHIO TRENDS IN ENROLLMENT

Tracing the landscape of the country’s public school enrollment back over the past 70+ years reveals demographic, economic, and social changes. The United States as a whole continues to undergo major shifts in public student enrollment. The baby boom of the late 1940s and 50s was followed by the baby bust of the 1960s and 70s. An “echo” baby boom occurred in the 1980s, which then was followed by the echo baby bust from 1990 to 2000. There was a slight uptick from 2000 to 2010. Since 2011, the total number of births has been relatively flat.



Source: CDC, National Vital Statistics Reports, Vol. 67 No.1, January 31, 2018

US Population - Live Birth Rate per 1,000 Population

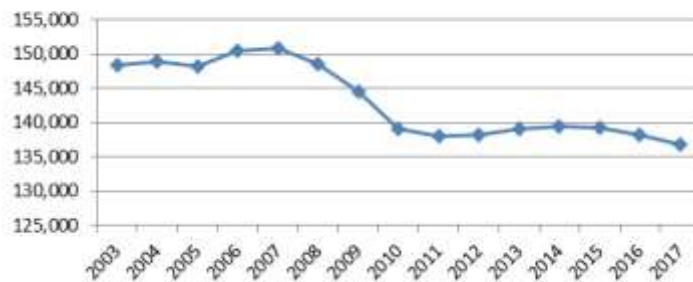


Source: CDC, National Vital Statistics Reports, Vol. 67 No.1, January 31, 2018

With the live birth rate, there was an increase for the first time in several years in 1998. Other increases occurred in 2000, 2006, and 2007. Since 2007, the birth rate has resumed a descending pattern, reaching an all-time low in 2013. In 2014, there was a slight uptick, but declined again in 2015 and 2016.

Ohio has experienced a similar trend in live births as seen around the country. Live birth counts increased in 2000. A descending pattern resumed in 2001 with a slight stabilization from 2002 to 2005. Births increased slightly again in 2006 and 2007 but then declined to an all-time low of 138,024 in 2011. In 2012, 2013, and 2014, there were slight increases, but counts for 2015, 2016, and 2017 show additional decline.

Ohio Birth Counts

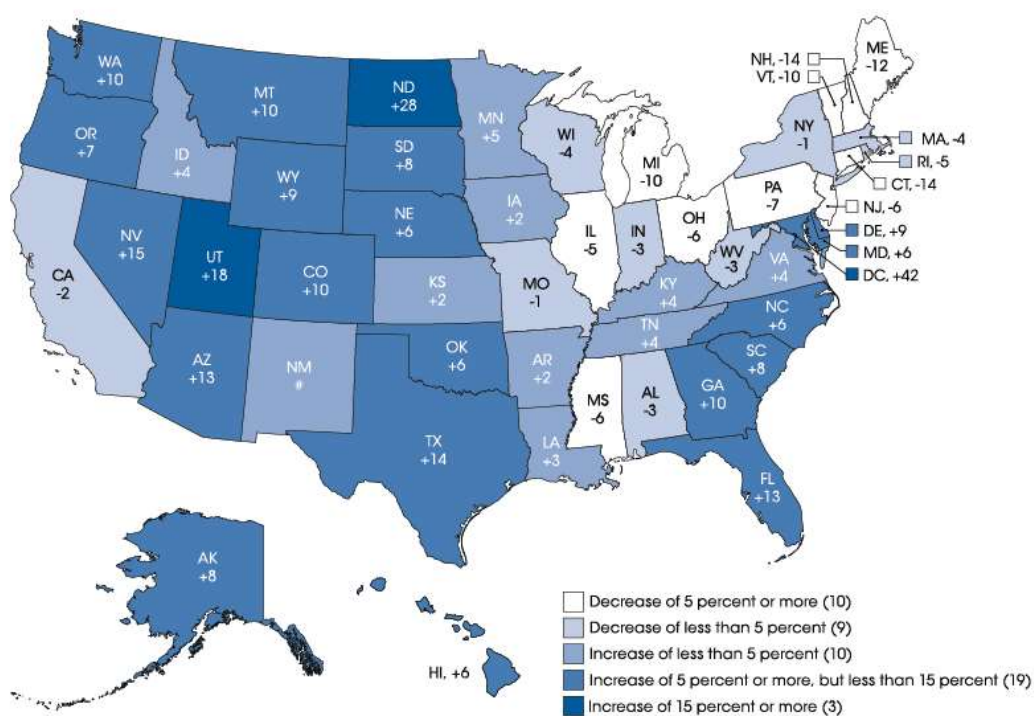


Cuyahoga Falls City School District

In addition, to births dropping in Ohio, the state is also aging. The median age in 2017 was 39.9 years of age while the national median age is 37.9 years. In 2010, the median age in Ohio was 38.3 years.

In 2014-15, approximately 56 million students were enrolled in grades Pre-K-12 in the United States, an increase of 3% since the 2011-02 school year. Overall, enrollment is projected to increase by approximately 3% by the 2026-27 school year.

The figure below illustrates the projected change in Pre-K-12 public school enrollment from the 2014-15 to the 2026-27 school year. Growth is expected to continue primarily in the southeast and west. Washington, D.C.; North Dakota; and Utah are projected to experience the most growth. Ohio is projected to experience a decrease of 6 percent.



SOURCE: U.S. Department of Education, National Center for Education Statistics, Common Core of Data (CCD), "State Nonfiscal Survey of Public Elementary/Secondary Education," 2014-15; and Public State Elementary and Secondary Enrollment Model: 1980-2026. See *Digest of Education Statistics 2016*, [table 203.20](#).

Cuyahoga Falls City School District

In Ohio, enrollment has declined steadily for both public and non-public school enrollment. From 2008-09 to 2017-18, public school enrollment declined by 140,602 students or approximately 7% statewide.

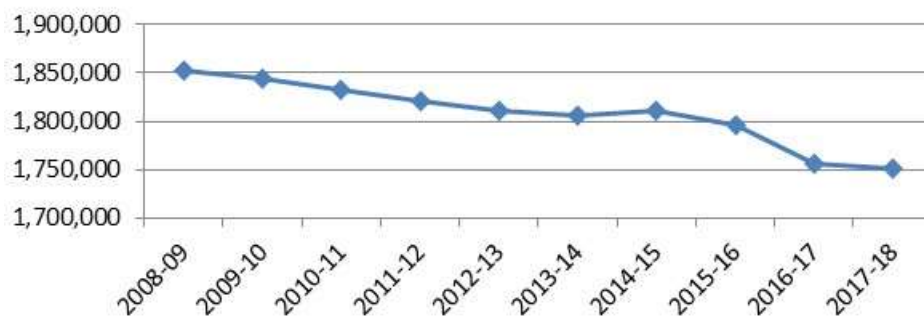
Ohio Public School Enrollment 2008-09 - 2017-18

Year	October Headcount*
2008-09	1,852,542
2009-10	1,844,447
2010-11	1,832,832
2011-12	1,820,312
2012-13	1,811,532
2013-14	1,806,267
2014-15	1,810,577
2015-16	1,795,339
2016-17	1,755,552
2017-18	1,751,888

Source: Ohio Department of Education

*includes grades K-12 and ungraded

Ohio Public School Enrollment



Cuyahoga Falls City School District

From 2008-09 – 2017-18, private school enrollment has declined by 26,486 students or 14 percent.

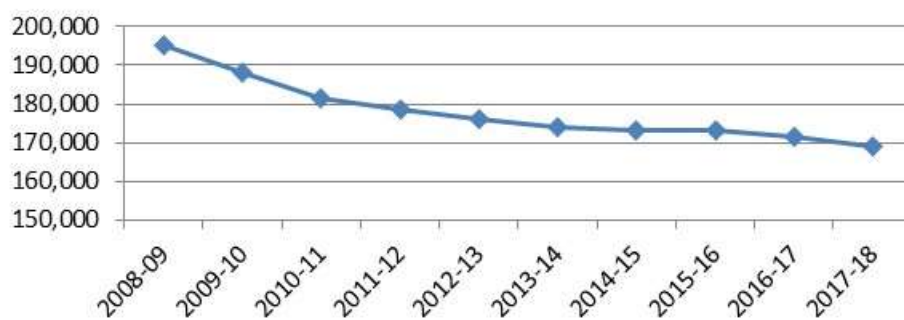
Ohio Chartered Non-Public School Enrollment 2008-09 - 2017-18

Year	October ADM*
2008-09	195,343
2009-10	187,994
2010-11	181,420
2011-12	178,702
2012-13	176,166
2013-14	173,966
2014-15	173,030
2015-16	172,990
2016-17	171,426
2017-18	168,857

Source: Ohio Department of Education

*includes grades K-12

Ohio Non-Public School Enrollment



Cuyahoga Falls City School District

Out of 610 school districts, only 89 (or approximately 15%) gained enrollment in grades K - 12 from the 2008-09 to the 2017-18 school year. Of the 521 school districts who lost enrollment, only 72 (or 14%) lost less than 5 percent, and 108 districts (or 21%) lost between 5 and 10 percent. Approximately 46% (or 240 districts) lost between 10 and 20 percent.

For those districts that gained enrollment, 54% increased by less than 5 percent. Of the 10 districts with the greatest increase in students, one is located in Delaware County and seven in Franklin County.

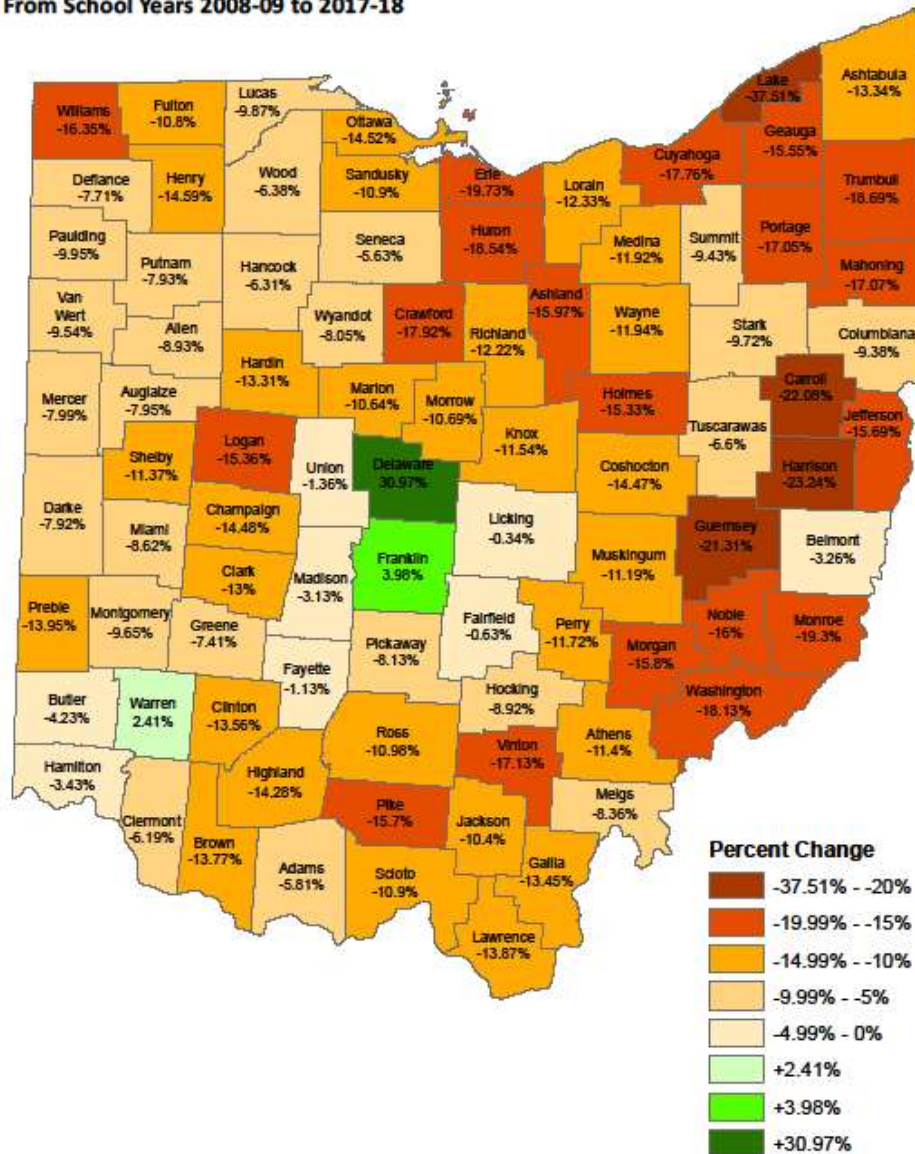
Analyzing enrollment from a county perspective, only 3 of the 88 counties in Ohio gained K – 12 enrollment from the 2008-09 to the 2017-18 school year: Delaware, Franklin and Warren.

County	Percentage Gain
Delaware	30.97%
Franklin	3.98%
Warren	2.41%

Lake County had the highest percentage loss of students at 37.54 percent. Fifty-nine percent of the counties (52 total) experienced a decline of greater than 10 percent. The map on the following page illustrates the gain/loss for each county from the 2008-09 to the 2017-18 school year.

Cuyahoga Falls City School District

Student Enrollment Growth/Loss
From School Years 2008-09 to 2017-18



Cuyahoga Falls City School District

ENROLLMENT PROJECTION METHODOLOGIES

When projecting future enrollments, it is vital to track the number of births, the patterns of enrollment, the amount of new housing activity, and the change in household composition.

In addition, any of the following factors could cause a significant change in projected student enrollments:

- ▶ Boundary adjustments
- ▶ New school openings
- ▶ Changes/additions in program offerings
- ▶ Preschool programs
- ▶ Change in grade configuration
- ▶ Interest rates/unemployment shifts
- ▶ Magnet/charter/private school opening or closure
- ▶ Zoning changes
- ▶ Unplanned new housing activity
- ▶ Planned, but not built, housing

Obviously, certain factors can be gauged and planned for far better than others. For instance, it may be relatively straightforward to gather housing data from local builders regarding the total number of lots in a planned subdivision and calculate the potential student yield. However, planning for changes in the unemployment rate, and how these may either boost or reduce public school enrollment, proves more difficult. In any case, it is essential to gather a wide variety of information in preparation for producing enrollment projections.

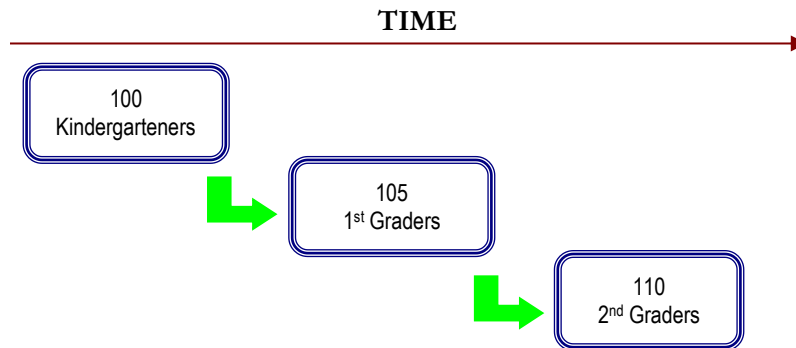
When looking ahead at a school district's enrollment over the next two, five, or ten years, it is helpful to approach the process from a global perspective. For example: How many new homes have been constructed each year? How many births have occurred each year in relation to the resident population? Is housing experiencing a turnover – if so, what is the composition of families moving in/out? Are more or less students attending private school or being home-schooled? What new educational policies are in place now that could affect student enrollment figures?

The data sets generated from questions such as these have led to the development of general methodologies to project future student enrollments. They are as follows:

Cuyahoga Falls City School District

Cohort Survival Method

A cohort is a group of persons [in this case, students]. The cohort survival projection methodology uses previous live birth data and historical student enrollments to “age” a known population or cohort throughout the school grades. For instance, a cohort begins when a group of kindergarteners enrolls in grade K and moves to first grade the following year, second grade the next year, and so on.



A “survival ratio” is developed to track how this group of students grew or shrunk in number as they moved through the grade levels. By determining survival ratios for each grade transition [i.e., 1st to 2nd grade] over a ten-year period of time, patterns emerge and projection ratios can be developed to be used as a multiplier.

For example, if student enrollment has consistently increased from the 8th to the 9th grade over the past ten years, the survival ratios for each year would be greater than 100 percent. Through analysis of the survival ratios, the projection ratio is determined and is multiplied by the current 8th grade to develop a projection for next year’s 9th grade.

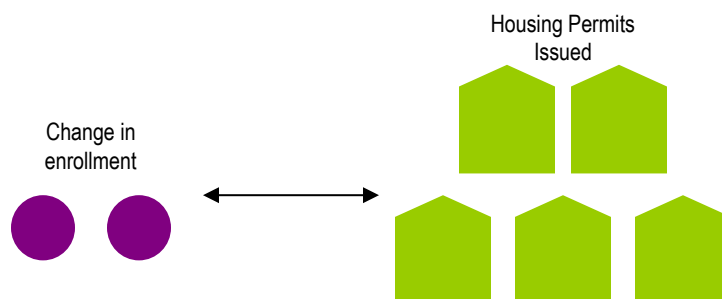
This methodology can be carried through to develop ten years of projection figures. Because there is not a grade cohort to follow for students coming into kindergarten, live birth counts are used to develop a survival ratio. Babies born five years previous to the kindergarten class are compared in number, and a ratio can be developed to project future kindergarten enrollments.

The cohort survival method is useful in areas where population is stable [relatively flat, growing steadily, or declining steadily], and where there have been no significant fluctuations in enrollment, births, and housing patterns from year to year.

Cuyahoga Falls City School District

Housing

Enrollment projections can also be determined by analyzing the housing data for the areas that make up a school district. Yield factors can be established by comparing the historic change in enrollment from year to year divided by the total number of building or occupancy permits issued. For example, if student enrollment has increased by approximately 100 students each year and approximately 200 building permits have been issued each year for the past ten years, then the yield factor would be approximately .5 students per building permit.



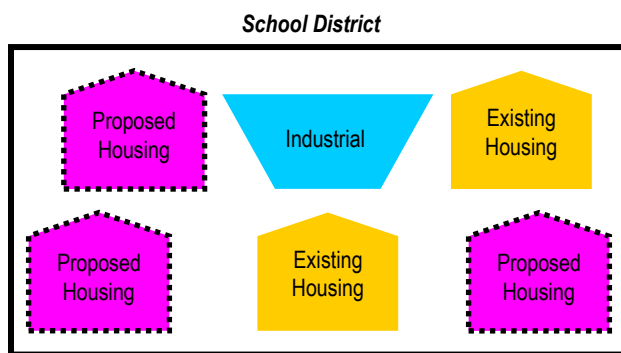
Once yield factors are established, the number of new students per year can be estimated by multiplying the yield factor by the number of projected new housing units. This method is effective when the rate of kindergarten enrollment far exceeds the live birth counts.

If housing demolitions are occurring in a district, these must also be taken into account. For instance, if housing demolitions/withdrawals have increased rapidly over recent years while new housing starts have remained relatively constant over many years, the conclusion may be that some of the new housing starts will simply be replacements for the families displaced by the demolitions. Of course, housing value and household composition would need to be further analyzed to confirm that this is indeed the case. It is possible that enrollment may remain flat or decline even though there is new housing occurring in the area.

Cuyahoga Falls City School District

Land-Saturation Analysis

Housing data also drives the land-saturation analysis enrollment methodology. In areas where there is a high rate of development and the future development patterns in the area are clear, a “build-out” scenario can be developed. The scenario takes into consideration the remaining acreage to be developed, planned rate of completion, zoning policies, density per acre, type of housing, and ratios of school-age children per household type. This method is particularly useful in areas experiencing rapid growth.



Geographic Information Systems

While not a methodology, the need for better tools and easier manipulation of data has led to a new industry standard in planning – GIS [Geographic Information Systems]. GIS technology allows school districts to quickly analyze countless data sets including birth data, housing information, and enrollment statistics.

When paired with enrollment projections, GIS becomes an invaluable information-management and decision-making tool. Often, county or city offices are already implementing GIS technology and data can be shared and expanded among these organizations in the district. GIS tables and maps are included within this report illustrating population, age, and income estimates and projections.

The cohort survival was the primary method used in the development of the enrollment projections for the Cuyahoga Falls City School District.

Cuyahoga Falls City School District

HISTORICAL ENROLLMENT

Over the past ten years, student enrollment in the Cuyahoga Falls City School District has decreased by 191 students in grades Pre-K – 12, including ungraded and career technical students. Total enrollment for the 2018-19 school year is 4,882 students.

The approximate percentages of mainstreamed special education students [Pre-K – 12] for the current school year are as follows:

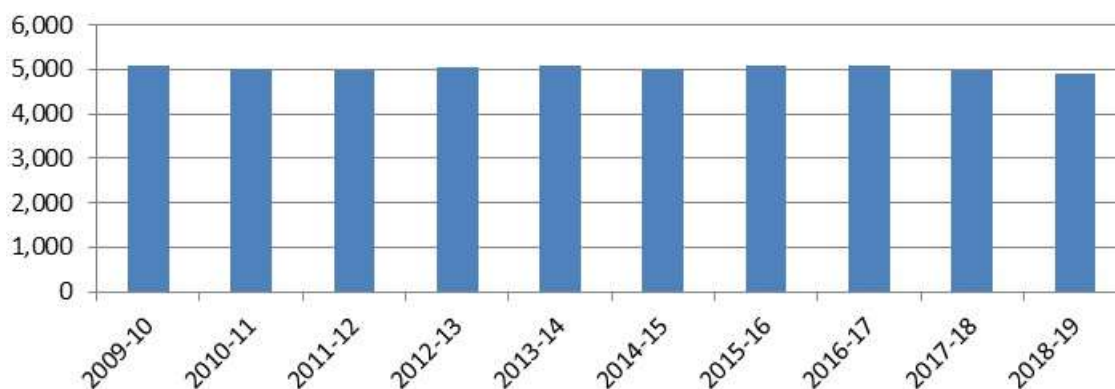
- Pre-K – 100%
- K-5 - 9%
- 6-8 – 14%
- 9-12 – 15%

The approximate percentages of self-contained special education students [Pre-K – 12] for the current school year are as follows:

- Pre-K – 0%
- K-5 – 1%
- 6-8 – 1%
- 9-12 – 5%

The following graph illustrates the District’s Pre-K – 12 enrollment history from 2009-10 through 2018-19.

**Cuyahoga Falls City School District
Historical Enrollment**



Cuyahoga Falls City School District

The following tables illustrate the District's enrollment history from 2009-10 through 2018-19.

**Cuyahoga Falls City School District
Historical Enrollment**

Grade	2009-10	2010-11	2011-12	2012-13	2013-14	2014-15	2015-16	2016-17	2017-18	2018-19
Pre-K (regular)*	38	46	36	47	50	58	58	51	62	51
Pre-K (special needs)	54	56	52	47	49	39	52	57	62	53
K	366	322	325	384	397	338	388	383	347	368
1	380	379	352	351	390	380	372	388	380	370
2	398	371	375	349	348	369	371	361	382	363
3	351	381	369	383	351	346	377	381	364	389
4	370	351	394	365	376	343	349	377	373	352
5	362	362	362	404	379	387	328	352	362	362
6	403	369	348	365	406	366	390	321	337	334
7	370	402	366	354	362	403	368	387	315	323
8	346	369	406	385	351	359	400	378	383	308
9	416	415	456	505	398	360	360	409	356	371
10	456	379	348	353	418	392	368	370	392	331
11	370	366	280	277	278	325	291	306	324	300
12	376	338	334	295	277	268	345	295	264	281
Pre-K - 12 Total	5,056	4,906	4,803	4,864	4,830	4,733	4,817	4,816	4,703	4,556
Ungraded	17	21	21	25	23	26	12	19	24	21
Career Tech Comprehensive - Low Bay	0	26	126	108	128	131	96	81	71	107
Career Tech Comprehensive - High Bay	0	0	0	0	0	0	11	8	11	9
Career Tech Off-Site	0	52	31	63	64	71	56	58	88	97
Career Tech On-Site - Low Bay	0	0	0	0	27	44	50	58	72	83
Career Tech On-Site - High Bay	0	0	0	0	0	0	10	10	6	9
Grand Total	5,073	5,005	4,981	5,060	5,072	5,005	5,052	5,050	4,975	4,882

Source: Ohio Department of Education, EMIS; Cuyahoga Falls City School District

**Cuyahoga Falls City School District
Historical Enrollment by Grade Group**

Grade	2009-10	2010-11	2011-12	2012-13	2013-14	2014-15	2015-16	2016-17	2017-18	2018-19
Pre-K (special needs) - 5	2,281	2,222	2,229	2,283	2,290	2,202	2,237	2,299	2,270	2,257
6 - 8	1,119	1,140	1,120	1,104	1,119	1,128	1,158	1,086	1,035	965
9 - 12	1,618	1,498	1,418	1,430	1,371	1,345	1,364	1,380	1,336	1,283
Pre-K - 12 Total	5,018	4,860	4,767	4,817	4,780	4,675	4,759	4,765	4,641	4,505
Ungraded	17	21	21	25	23	26	12	19	24	21
Career Tech Comprehensive - Low Bay	0	26	126	108	128	131	96	81	71	107
Career Tech Comprehensive - High Bay	0	0	0	0	0	0	11	8	11	9
Career Tech Off-Site	0	52	31	63	64	71	56	58	88	97
Career Tech On-Site - Low Bay	0	0	0	0	27	44	50	58	72	83
Career Tech On-Site - High Bay	0	0	0	0	0	0	10	10	6	9
Grand Total	5,035	4,959	4,945	5,013	5,022	4,947	4,994	4,999	4,913	4,831

Source: Ohio Department of Education, EMIS; Cuyahoga Falls City School District

*regular Pre-K enrollment is not included in grade group table above or in the projected enrollment figures.

Cuyahoga Falls City School District

COMMUNITY SCHOOL ENROLLMENT

In Ohio, community school enrollment has increased dramatically over the last decade. From 2007-08 to 2016-17, enrollment has increased by approximately 35% from 82,643 students in 313 community schools to 111,272 students in 362 community schools. However, there has been a decrease of 8% in both enrollment and number of schools since the 2013-14 school year.

Ohio

Community School Enrollment (Pre-K - 12)

Grade	2007-08	2008-09	2009-10	2010-11	2011-12	2012-13	2013-14	2014-15	2015-16	2016-17
Grand Total	82,643	88,536	93,699	99,658	108,124	115,324	120,893	120,495	117,126	111,272

Source: Ohio Department of Education, Ohio Community Schools Annual Report 2016-17

FTE students

Ohio Community School Enrollment



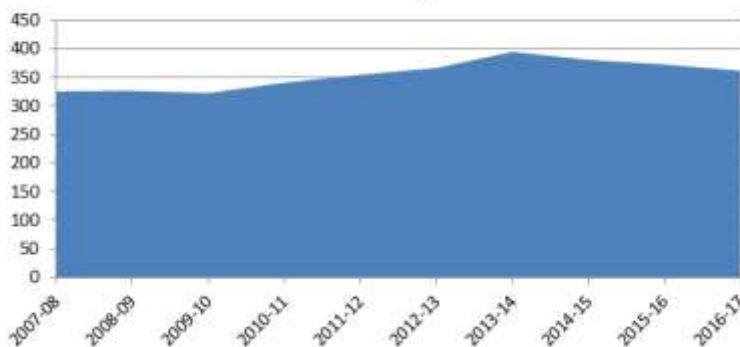
Ohio

Number of Community Schools

Grade	2007-08	2008-09	2009-10	2010-11	2011-12	2012-13	2013-14	2014-15	2015-16	2016-17
Grand Total	326	327	323	341	355	367	395	381	373	362

Source: Ohio Department of Education, Ohio Community Schools Annual Report 2016-17

Number of Community Schools in Ohio



Cuyahoga Falls City School District

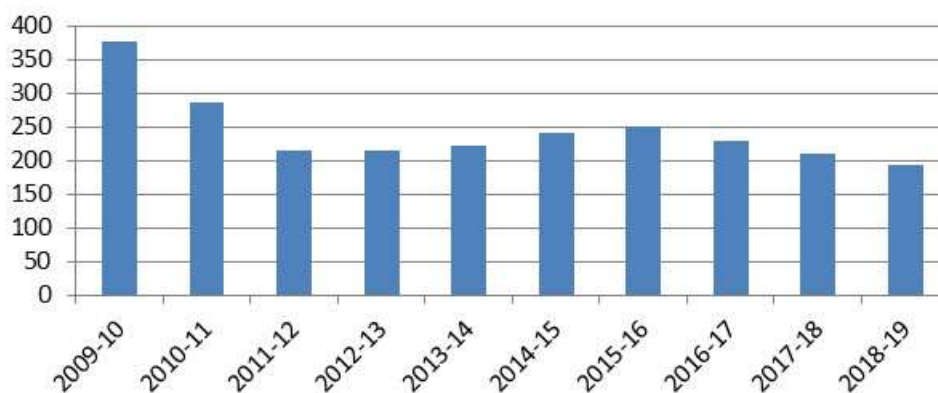
Since 2009-10, the number of Cuyahoga Falls City School District students attending community schools has decreased from 377 to 193 students with some fluctuation. Enrollment of Cuyahoga Falls City School District students attending community schools should be closely monitored as it may have a significant impact on District enrollment in the future.

**Cuyahoga Falls City School District
Community School Enrollment**

Grade	2009-10	2010-11	2011-12	2012-13	2013-14	2014-15	2015-16	2016-17	2017-18	2018-19
Pre-K	0	0	0	0	0	0	0	0	0	0
K	13	6	8	5	7	7	11	3	5	4
1	7	4	4	11	6	5	5	8	4	4
2	12	6	6	12	10	4	7	5	8	4
3	11	5	6	11	11	11	6	7	4	8
4	7	7	10	9	8	6	6	1	7	7
5	7	3	6	11	8	5	4	5	3	9
6	9	10	8	7	9	10	4	3	5	8
7	12	11	9	14	14	13	12	8	9	9
8	21	11	12	9	12	16	18	12	11	13
9	53	40	25	26	30	31	37	27	28	18
10	64	45	31	32	34	44	35	31	38	30
11	72	59	43	30	41	55	52	54	30	38
12	76	69	48	39	31	34	53	62	59	33
Ungraded	13	11	0	0	0	0	0	3	0	8
Grand Total	377	287	216	216	221	241	250	229	211	193

Source: Ohio Department of Education, EMIS; Cuyahoga Falls City School District

**Cuyahoga Falls City School District
Students Attending Community Schools**



Cuyahoga Falls City School District

OPEN ENROLLMENT

Since 2009-10, the number of Cuyahoga Falls City School District students “open enrolling” into the District has increased from 260 to 587 students with some fluctuation. The number of students “open enrolling” out of the District has increased from 189 to 350 students with some fluctuation. Significant changes in the number of students “open enrolling” into or out of the District from year to year can impact enrollment projections and should be monitored.

**Cuyahoga Falls City School District
Open Enrollment - IN**

Grade	2009-10	2010-11	2011-12	2012-13	2013-14	2014-15	2015-16	2016-17	2017-18	2018-19
Pre-K	0	0	0	0	0	0	0	0	0	0
K	21	10	20	40	25	26	48	45	42	50
1	14	15	16	24	30	24	35	46	54	45
2	18	19	21	25	28	27	33	32	48	53
3	18	13	23	24	29	29	28	39	36	53
4	22	16	13	25	20	29	35	31	40	39
5	13	16	13	19	24	24	31	38	38	43
6	6	12	15	21	25	29	40	27	41	25
7	9	7	15	23	21	30	33	44	39	39
8	10	9	8	30	19	22	40	33	54	47
9	27	27	21	47	35	33	35	43	38	54
10	41	24	25	42	31	42	45	41	48	42
11	26	39	23	40	37	32	37	41	48	47
12	35	29	44	33	38	38	38	36	38	48
Ungraded	0	0	0	0	0	0	0	3	2	2
Grand Total	260	236	257	393	362	385	478	499	566	587

Source: Ohio Department of Education, EMIS; Cuyahoga Falls City School District

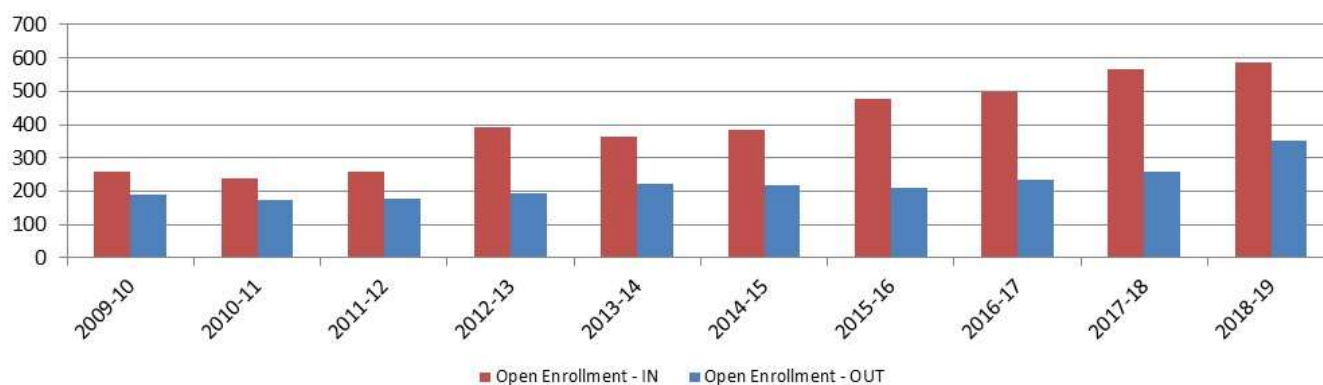
Cuyahoga Falls City School District

Cuyahoga Falls City School District Open Enrollment - OUT

Grade	2009-10	2010-11	2011-12	2012-13	2013-14	2014-15	2015-16	2016-17	2017-18	2018-19
Pre-K	0	0	0	0	0	0	0	0	0	0
K	11	14	13	12	7	5	1	0	5	12
1	15	10	11	13	8	9	12	21	5	19
2	12	10	12	10	15	13	11	12	25	10
3	15	8	8	12	15	15	12	9	13	21
4	15	10	12	10	19	15	15	13	12	18
5	20	11	13	17	16	22	17	18	19	26
6	15	16	15	19	19	17	20	14	25	28
7	14	15	15	15	18	14	16	30	19	33
8	14	19	13	19	18	21	14	15	31	30
9	12	18	13	18	20	24	22	20	20	44
10	12	12	17	14	23	17	26	24	25	31
11	15	14	16	18	18	25	18	28	27	35
12	19	18	19	18	24	22	25	27	32	43
Ungraded	0	0	0	0	0	0	0	1	0	0
Grand Total	189	175	177	195	220	219	209	232	258	350

Source: Ohio Department of Education, EMIS; Cuyahoga Falls City School District

Cuyahoga Falls City School District Open Enrollment



Cuyahoga Falls City School District

LIVE BIRTH DATA

Utilization of live birth data is recommended when projecting future kindergarten enrollments as it provides a helpful overall trend. The live birth counts are used in determining a birth-to-kindergarten survival ratio. This ratio identifies the percentage of children born in a representative area who attend kindergarten in the District five years later. The survival ratios for birth-to-kindergarten as well as grades 1-12 can be found later in this report.

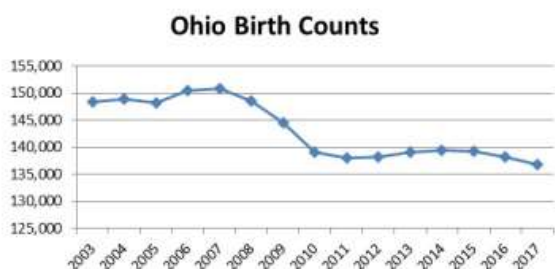
The Ohio Department of Health [ODH] data warehouse provides information about live birth events for Ohio residents. Information about events occurring outside of Ohio to Ohio residents is included. Information about events occurring inside Ohio to non-Ohio residents is not included.

Data is arranged by the residence of the mother. For example, if a mother lives in Powell, Delaware County but delivers her baby in Columbus, Franklin County, the birth is counted in Powell, Delaware County.

The number of live births is recorded by:

- ▶ State
- ▶ County
- ▶ City/Town
- ▶ Census Tract
- ▶ Zip Code
- ▶ Address [not available to the public]

Live birth counts are different from live birth rates. The live birth count is the actual number of live births. A birth rate is the number of births per 1,000 women in a specified population group. Birth rates are provided for counties only and for 9 age groups from 10-14 years to 45+ years.



Ohio has experienced a similar trend in live births as seen around the country. Live birth counts increased in 2000. A descending pattern resumed in 2001 with a slight stabilization from 2002 to 2005. Births increased slightly again in 2006 and 2007 but then declined to an all-time low of 138,024 in 2011. In 2012, 2013, and 2014, there were slight increases, but counts for 2015, 2016, and 2017 show additional decline.

Cuyahoga Falls City School District

The following table and graph include the live birth counts for zip codes 44221, 44223, and 44224.

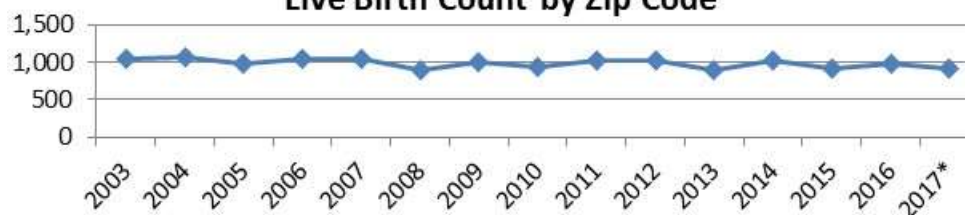
**Cuyahoga Falls City School District
Live Birth Count by Zip Code
2003-2017**

Year	44221	44223	44224	Total
2003	398	207	438	1,043
2004	407	243	428	1,078
2005	371	192	423	986
2006	423	192	425	1,040
2007	395	191	462	1,048
2008	367	164	372	903
2009	367	186	441	994
2010	365	174	398	937
2011	399	183	435	1,017
2012	392	174	455	1,021
2013	353	141	404	898
2014	382	198	441	1,021
2015	332	155	430	917
2016	360	165	450	975
2017*	355	158	413	926

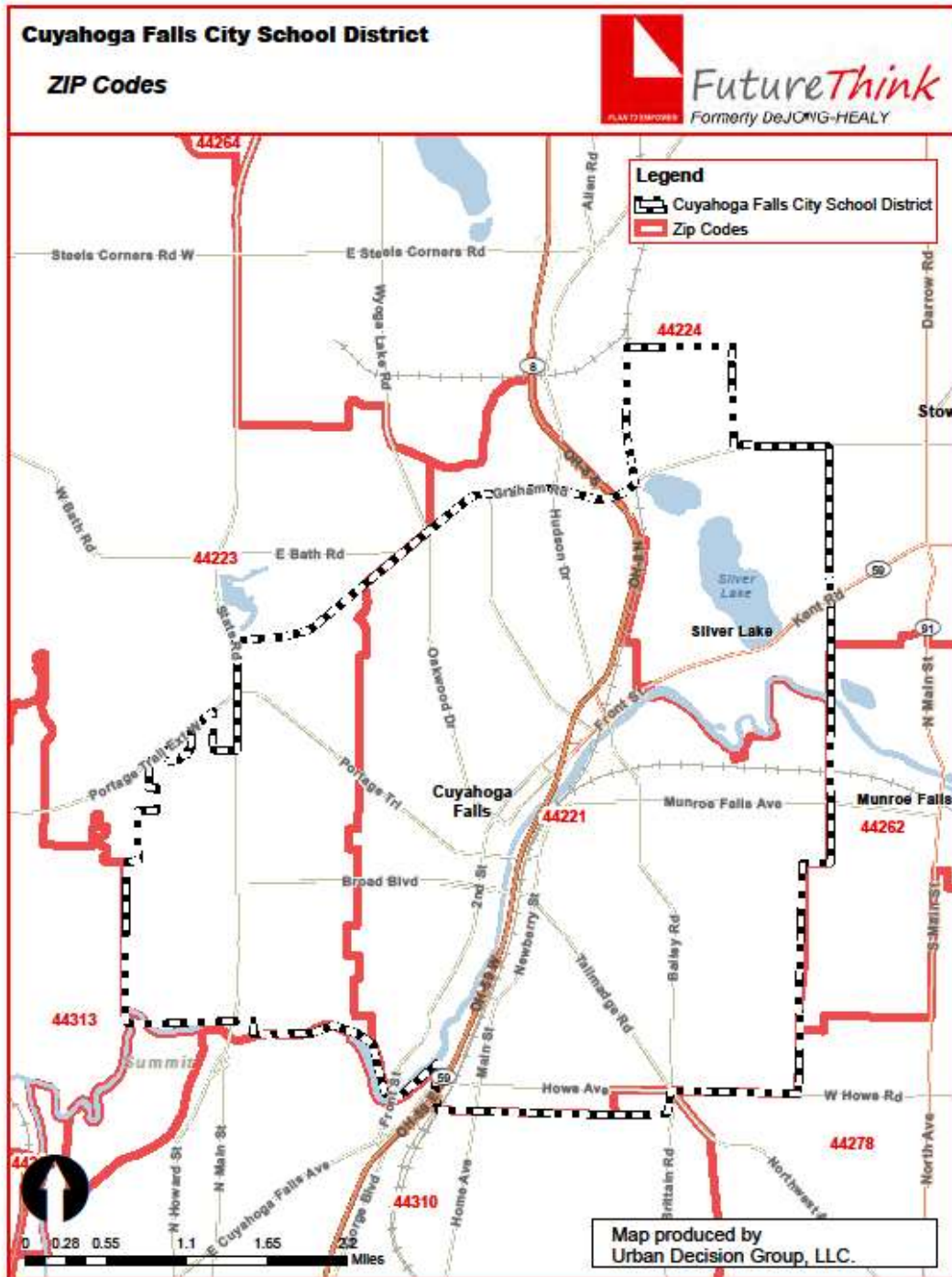
Source: Ohio Department of Health, Statistical Analysis Unit

*preliminary

**Cuyahoga Falls City School District
Live Birth Count by Zip Code**



Cuyahoga Falls City School District



Cuyahoga Falls City School District

DEMOGRAPHICS

The Cuyahoga Falls City School District is comprised of Cuyahoga Falls City and Silver Lake Village in Summit County. General demographic data is included in the following tables for the areas located completely or partially in the District.

General Demographic Information

	Summit County	State of Ohio
Per Capita Income	\$30,803	\$29,011
Median Household Income	\$53,291	\$52,407
Persons Below Poverty	13.6%	14.9%

Source: US Census, American Community Survey, 2017 5-Year Estimates

Total Population

	2000 Census	2010 Census
Summit County	542,899	541,781
Cuyahoga Falls City	49,374	49,652
Silver Lake Village	3,019	2,519

Source: ODOD Policy Research & Strategic Planning Office, August 2011

Also included are block group estimates and projections provided by ESRI. ESRI uses a time series of estimates from the U.S. Census Bureau that includes the latest estimates and inter-censal estimates adjusted for error of closure. The Census Bureau's time series is consistent, but testing has revealed improved accuracy by using a variety of sources to track county population trends.

ESRI also employs a time series of building permits and housing starts plus residential deliveries. Data sources are integrated and then analyzed by Census Block Groups.

Sources of data include:

- ▶ Supplementary Surveys of the Census Bureau
- ▶ Bureau of Labor Statistics' (BLS) Local Area Unemployment Statistics
- ▶ BLS Occupational Employment Statistics
- ▶ *InfoUSA*
- ▶ U.S. Bureau of the Census' Current Population Survey
- ▶ National Planning Association Data Service

Cuyahoga Falls City School District

Below is a list of definitions as they appear on the U.S. Census Bureau website, to aid in interpretation of the following tables and maps.

Household:

A household includes all the people who occupy a housing unit as their usual place of residence.

Average family size:

A measure obtained by dividing the number of members of families by the total number of families (or family householders).

Family household (Family):

A family includes a householder and one or more people living in the same household who are related to the householder by birth, marriage, or adoption. All people who are related to the householder are regarded as members of his or her family. A family household may contain people not related to the householder, but those people are not included as part of the householder's family in census tabulations. Thus, the number of family households is equal to the number of families, but family households may include more members than do families. A household can contain only one family for purposes of census tabulations. Not all households contain families since a household may comprise a group of unrelated people or one person living alone.

Householder:

The person, or one of the people, in whose name the home is owned, being bought, or rented. If there is no such person present, any household member 15 years old and over can serve as the householder for the purposes of the census. Two types of householders are distinguished: a family householder and a nonfamily householder. A family householder is a householder living with one or more people related to him or her by birth, marriage, or adoption. The householder and all people in the household related to him are family members. A nonfamily householder is a householder living alone or with nonrelatives only.

Cuyahoga Falls City School District

The following tables illustrate the current estimates and 5-year population projections based on block groups that comprise the state and school district, indicating areas of current and projected growth. The tables have been developed to determine selected age group projections and projections for household income, family size, and total households.

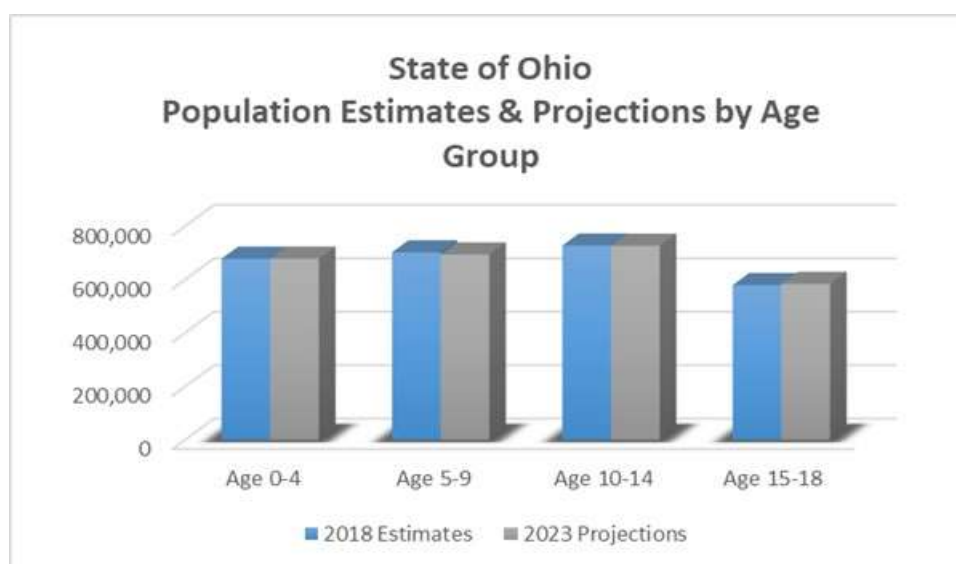
The total population in the State of Ohio is 11,772,676. This population is projected to increase by 146,828 people, or approximately 1% over a 5-year period.

The 0-18 year-old population in the State currently totals 2,687,291. This population is projected to decrease by 4,559 children, or less than 1 percent.

The median age is projected to increase by approximately 2% from 40.0 to 40.7 years of age.

State of Ohio	2018 Estimates	2023 Projections	Change 2018-23	Change 2018-23 (%)
Total Population	11,772,676	11,919,504	146,828	1.2%
Age 0-4	678,107	678,004	-103	0.0%
Age 5-9	702,177	693,853	-8,324	-1.2%
Age 10-14	727,557	726,814	-743	-0.1%
Age 15-18	579,450	584,061	4,611	0.8%
Total Age 0-18	2,687,291	2,682,732	-4,559	-0.2%
Median Age	40.0	40.7	0.7	1.8%

Source: ESRI

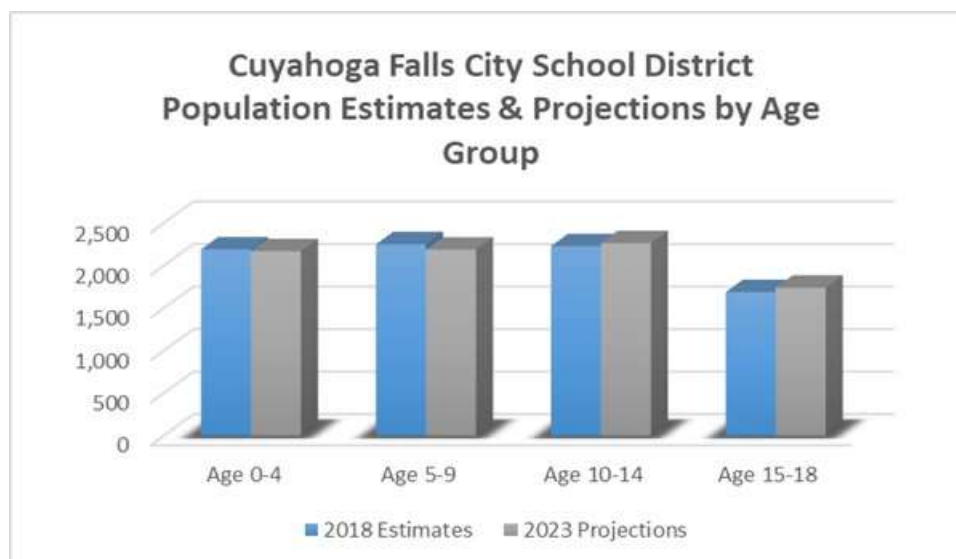


Cuyahoga Falls City School District

The total population in the District is 41,271. This population is projected to increase by 81 people, or less than 1% over a 5-year period. The 0-18 year-old population in the District currently totals 8,370. This population is projected to increase by 7 people, or less than 1 percent. The median age is projected to increase by approximately 3%, from 40.8 to 41.9 years of age.

Cuyahoga Falls City School District	2018 Estimates	2023 Projections	Change 2018-23	Change 2018-23 (%)
Total Population	41,271	41,352	81	0.2%
Age 0-4	2,193	2,174	-19	-0.9%
Age 5-9	2,254	2,192	-62	-2.8%
Age 10-14	2,231	2,268	37	1.7%
Age 15-18	1,692	1,743	51	3.0%
Total Age 0-18	8,370	8,377	7	0.1%
Median Age	40.8	41.9	1.1	2.7%

Source: ESRI



Cuyahoga Falls City School District

Median and average household incomes in the State are projected to increase by approximately 11% and 15%, respectively over a 5-year period. The average family size and total number of family households are both expected to increase slightly.

State of Ohio	2018 Estimates	2023 Projections	Change 2018-23	Change 2018-23 (%)
Median Household Income	\$53,378	\$59,356	\$5,978	11.2%
Average Household Income	\$72,517	\$83,630	\$11,113	15.3%
Average Family Size	3.04	3.05	0.01	0.3%
Total Family Households	3,005,668	3,025,590	19,922	0.7%

Source: ESRI

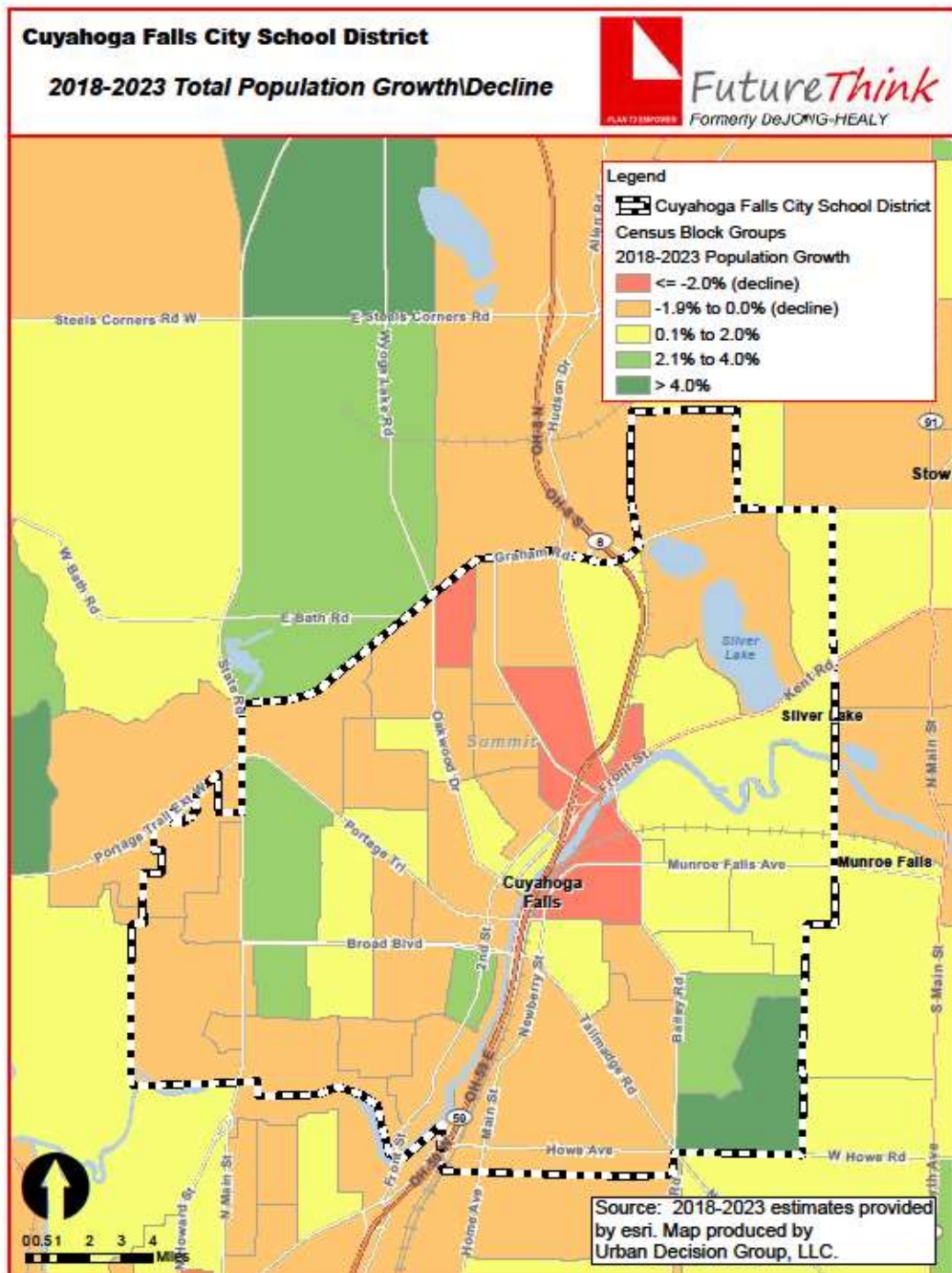
Median and average household incomes in the District are projected to increase by approximately 8% and 14%, respectively over a 5-year period. The average family size is projected to increase slightly, and the number of family households is projected to decline slightly.

Cuyahoga Falls City School District	2018 Estimates	2023 Projections	Change 2018-23	Change 2018-23 (%)
Median Household Income	\$51,522	\$55,545	\$4,023	7.8%
Average Household Income	\$61,583	\$70,381	\$8,798	14.3%
Average Family Size	2.93	2.94	0.01	0.3%
Total Family Households	10,369	10,294	-75	-0.7%

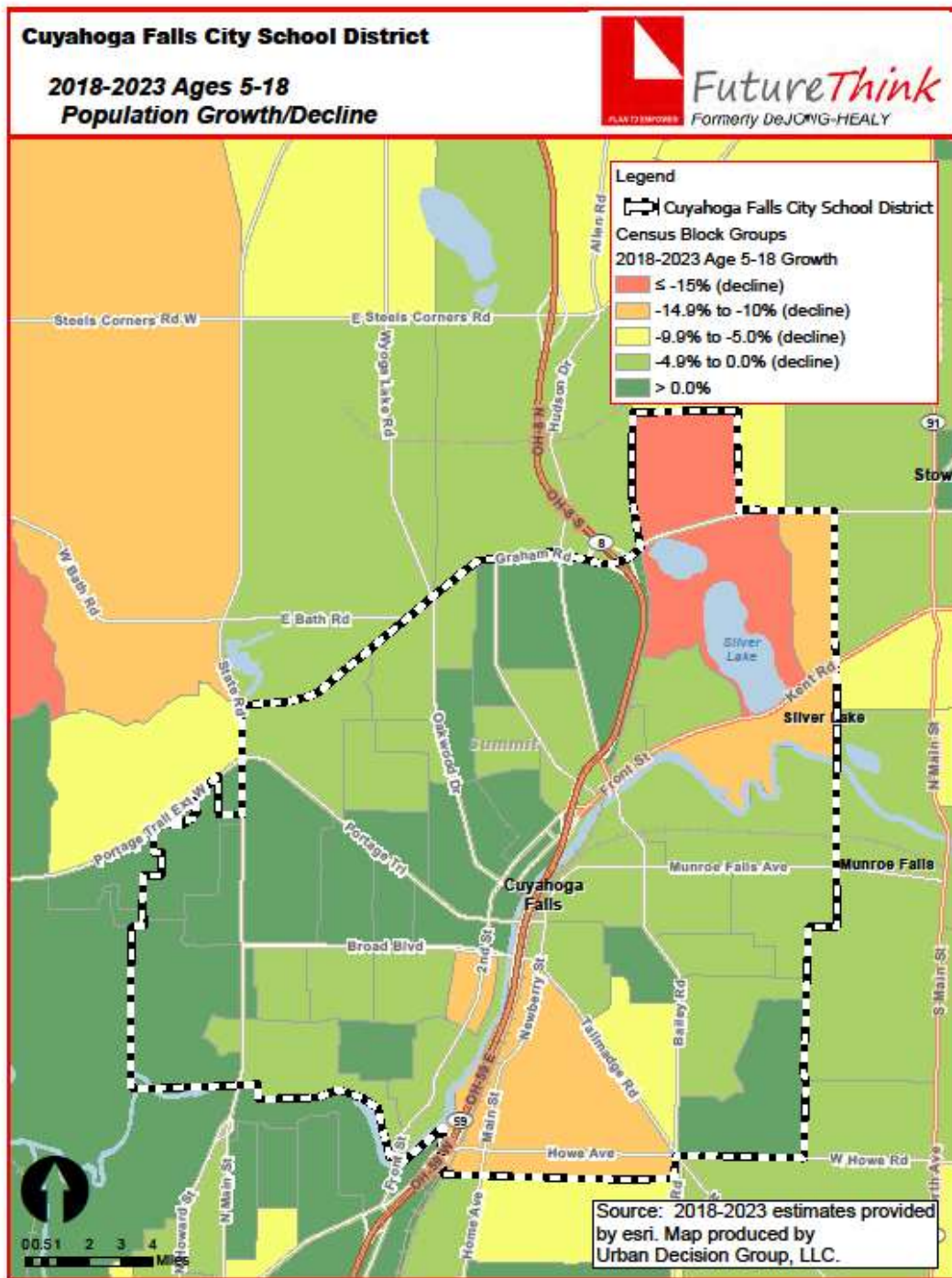
Source: ESRI

The maps on the following pages illustrate the data identified in the tables. The color coding identifies areas within the District that may be increasing or decreasing at different rates than others.

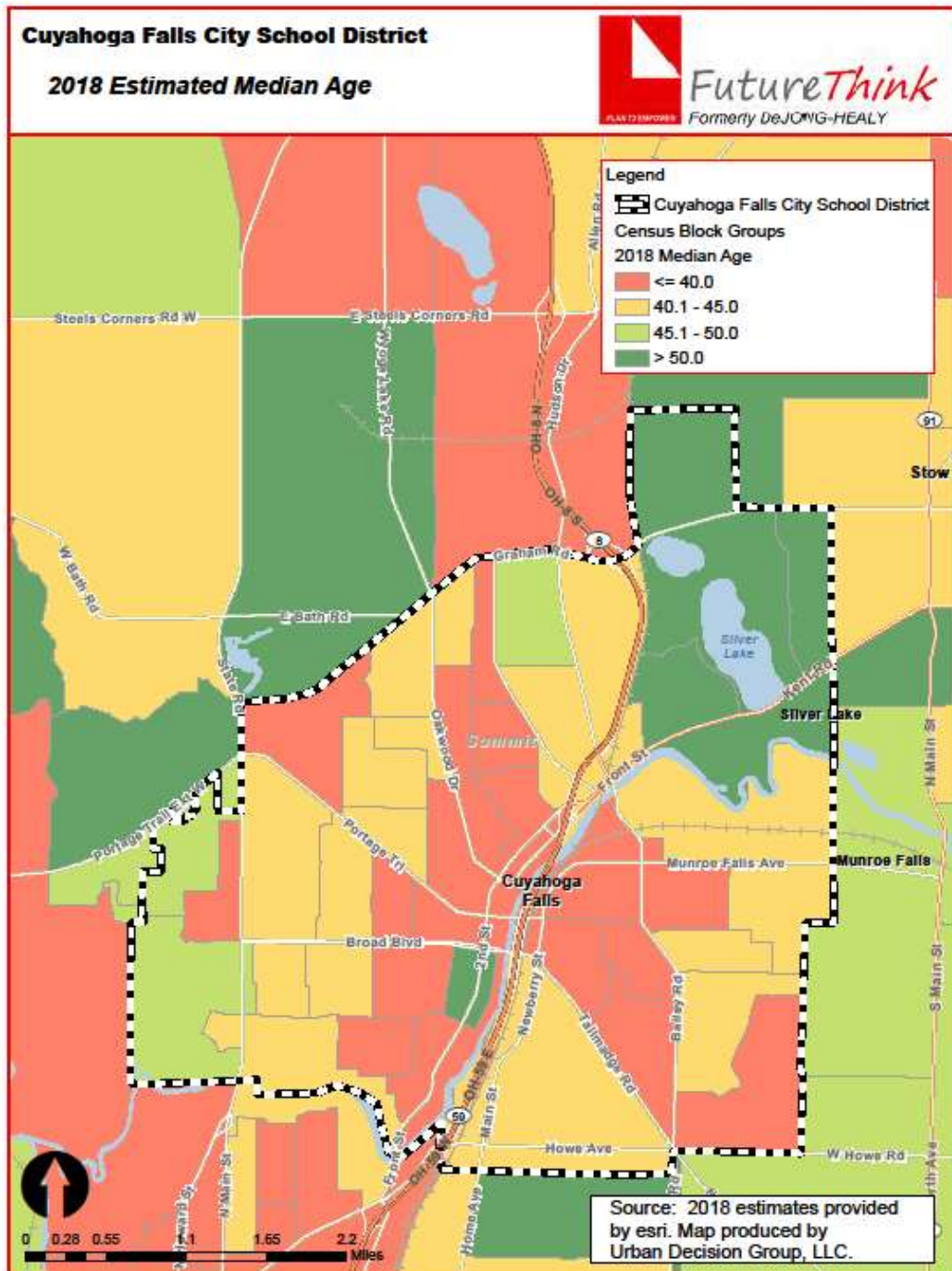
Cuyahoga Falls City School District



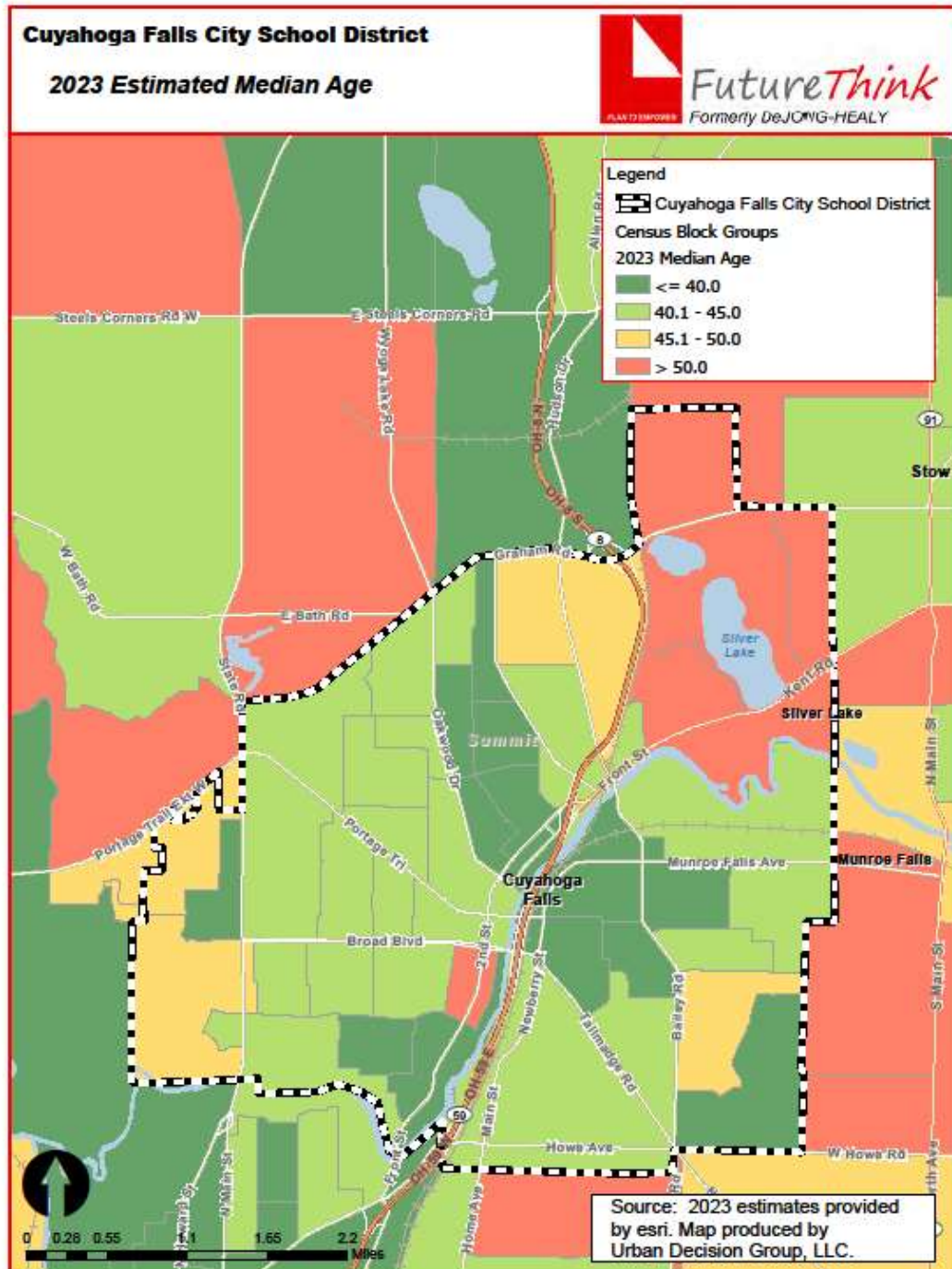
Cuyahoga Falls City School District



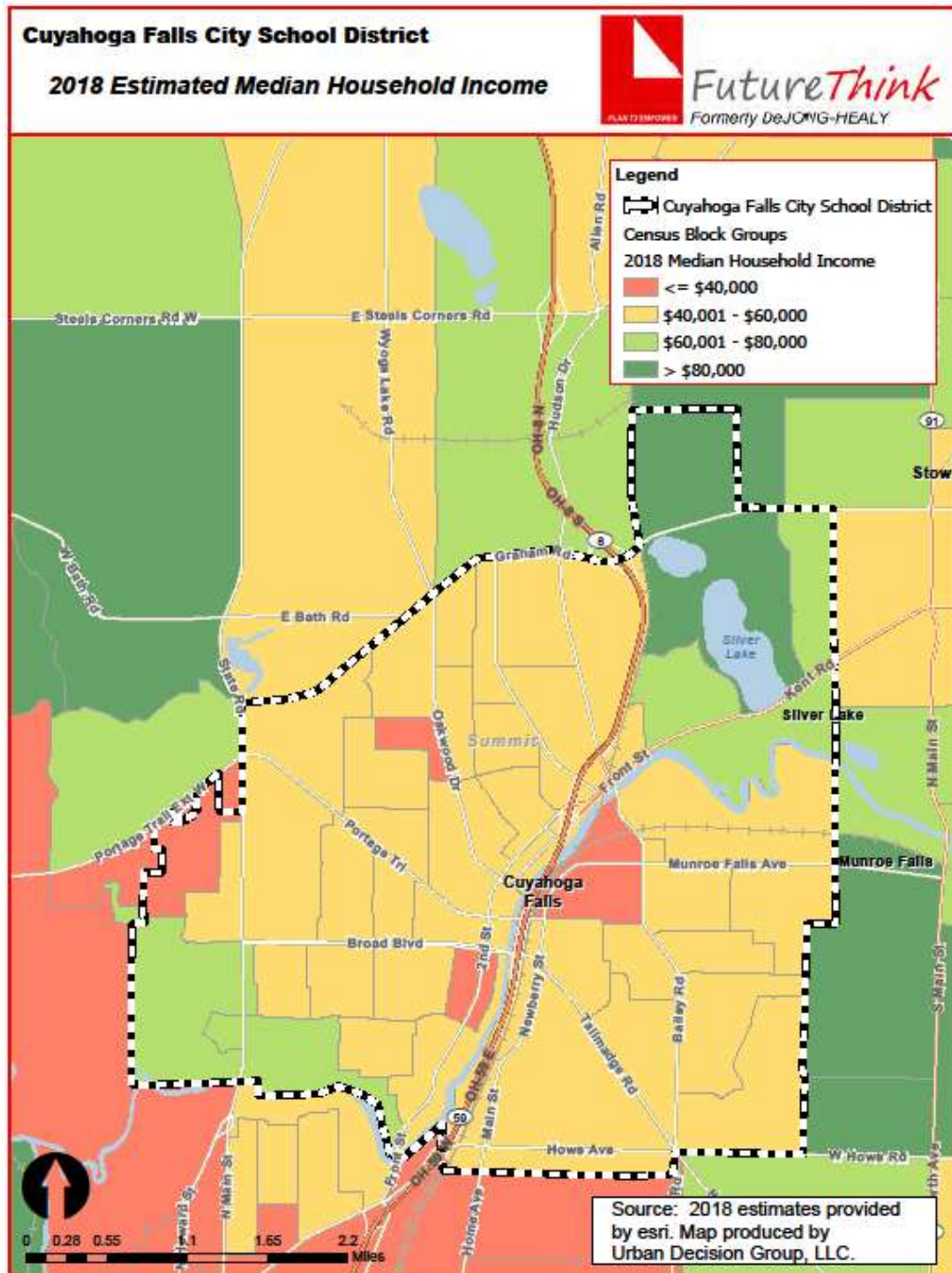
Cuyahoga Falls City School District



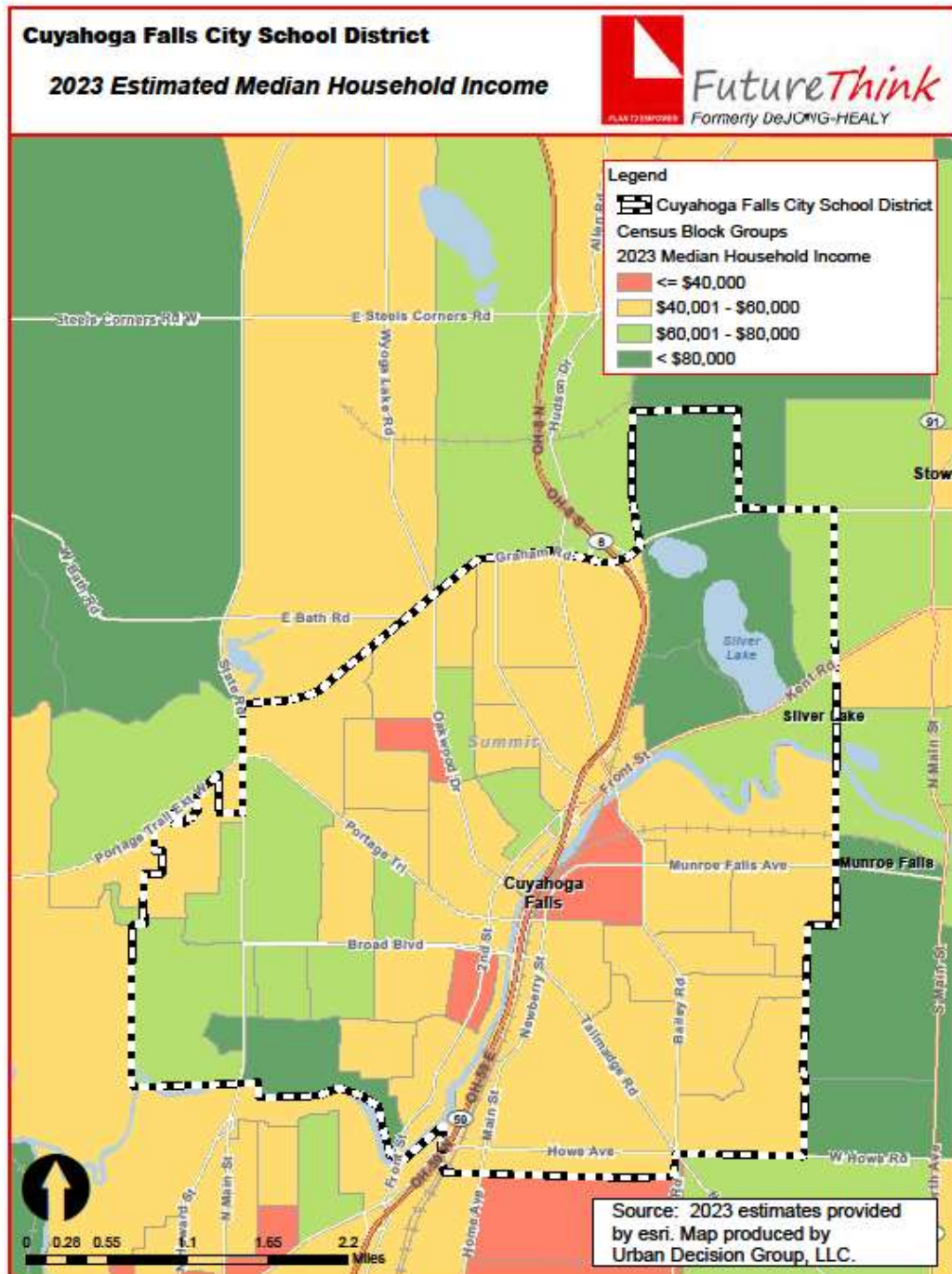
Cuyahoga Falls City School District



Cuyahoga Falls City School District



Cuyahoga Falls City School District



Cuyahoga Falls City School District

HOUSING INFORMATION

The chart below illustrates the number of single-family dwelling building permits issued each year in Cuyahoga Falls City and Summit County.

of Building Permits Issued for Single Family Dwellings

Year	Cuyahoga Falls City	Summit County
2008	52	593
2009	38	488
2010	19	482
2011	0	476
2012	0	437
2013	0	435
2014	0	471
2015	0	561
2016	0	636
2017	0	623
2018*	0	434

Source: SOCDS Building Permits Database

* through October 2018

Cuyahoga Falls City School District

SURVIVAL RATIOS

The chart below demonstrates the changes in enrollment as students move through the system. Percentages greater than 100 indicate that there are more students than there were in the previous grade the previous year. In other words, there was growth and new students entered the system. Percentages less than 100 indicate that there was decline with students leaving the system.

- ▶ Birth to Kindergarten: This ratio indicates the number of children born in the area who attend kindergarten in the District 5 years later. Percentages less than 100% result from movement out of the district, attendance at a non-public or charter school, or residence in another district within the same area.
- ▶ Grades 8-9: The higher than usual percentage often is a result of school district promotion policies. Often in school districts, students are promoted from 8th to 9th grade and after one year in 9th grade do not have sufficient credits to be classified as 10th graders and are counted again as 9th graders the following year. There may also be students who attended private or charter schools or are home schooled through grade 8 and then attend public schools for high school education.

The following table illustrates the survival ratios for the Cuyahoga Falls City School District.

from	to	birth -> K	K->1	1->2	2->3	3->4	4->5	5->6	6->7	7->8	8->9	9->10	10->11	11->12
2009	2010	32.7%	103.6%	97.6%	95.7%	100.0%	97.8%	101.9%	99.8%	99.7%	119.9%	91.1%	80.3%	91.4%
2010	2011	31.3%	109.3%	98.9%	99.5%	103.4%	103.1%	96.1%	99.2%	101.0%	123.6%	83.9%	73.9%	91.3%
2011	2012	36.6%	108.0%	99.1%	102.1%	98.9%	102.5%	100.8%	101.7%	105.2%	124.4%	77.4%	79.6%	105.4%
2012	2013	44.0%	101.6%	99.1%	100.6%	98.2%	103.8%	100.5%	99.2%	99.2%	103.4%	82.8%	78.8%	100.0%
2013	2014	34.0%	95.7%	94.6%	99.4%	97.7%	102.9%	96.6%	99.3%	99.2%	102.6%	98.5%	77.8%	96.4%
2014	2015	41.4%	110.1%	97.6%	102.2%	100.9%	95.6%	100.8%	100.5%	99.3%	100.3%	102.2%	74.2%	106.2%
2015	2016	37.7%	100.0%	97.0%	102.7%	100.0%	100.9%	97.9%	99.2%	102.7%	102.3%	102.8%	83.2%	101.4%
2016	2017	34.0%	99.2%	98.5%	100.8%	97.9%	96.0%	95.7%	98.1%	99.0%	94.2%	95.8%	87.6%	86.3%
2017	2018	41.0%	106.6%	95.5%	101.8%	96.7%	97.1%	92.3%	95.8%	97.8%	96.9%	93.0%	76.5%	86.7%
	average	36.95%	103.784%	97.57%	100.5%	99.30%	100.0%	98.1%	99.2%	100.3%	107.491%	91.940%	79.081%	96.100%
	standard deviation	4.141%	4.727%	1.521%	2.032%	1.914%	3.138%	2.998%	1.523%	2.170%	11.105%	8.456%	4.071%	7.151%

Cuyahoga Falls City School District

ENROLLMENT PROJECTION

Enrollment projections were developed after analyzing the data collected in this report. The projections indicate a decrease of 67 students in grades Pre-K through 12, not including regular Pre-K students, from the 2018-19 to the 2028-29 school year. The following tables and graph illustrate projected enrollments by grade and by grade group through the 2028-29 school year.

Preschool:

The Ohio School Design Manual [OSDM] provides space for preschool students with disabilities and a maximum of 40 ECE preschool students. The Cuyahoga Falls City School District funds preschool through the following sources:

- General fund
- Tuition

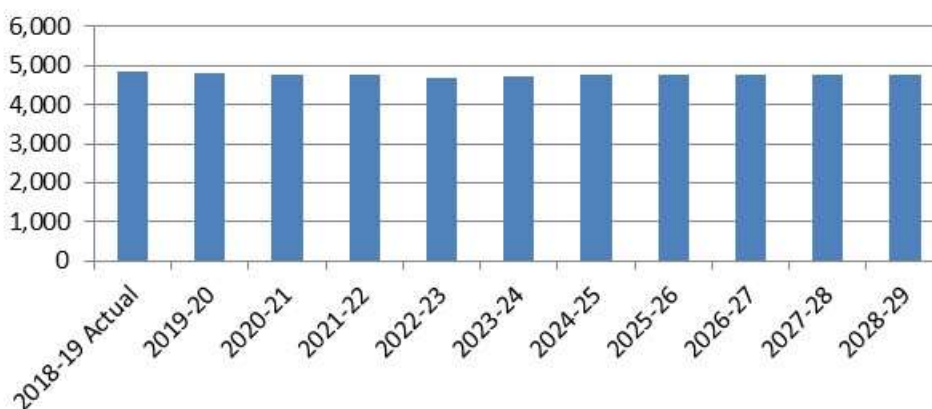
Kindergarten:

The OSDM provides space for all day, every day kindergarten.

Career Technical:

Due to the specialized space requirements, career technical students are pulled out of the 11th and 12th grade enrollments and projected separately.

**Cuyahoga Falls City School District
Projected Enrollment**



Cuyahoga Falls City School District

Cuyahoga Falls City School District Projected Enrollment

Grade	2018-19 Actual	2019-20	2020-21	2021-22	2022-23	2023-24	2024-25	2025-26	2026-27	2027-28	2028-29
Pre-K (special needs)	53	62	56	60	57	58	58	58	58	58	58
K	368	394	354	376	357	366	366	366	366	366	366
1	370	380	406	365	388	368	377	377	377	377	377
2	363	361	370	396	355	378	359	367	367	367	367
3	389	370	368	377	403	362	385	365	374	374	374
4	352	382	363	361	370	395	355	378	359	367	367
5	362	343	373	354	352	361	385	346	368	350	358
6	334	350	332	360	342	340	348	372	334	355	338
7	323	331	347	328	356	339	336	345	368	331	352
8	308	322	330	345	327	355	337	335	343	367	329
9	371	304	317	325	340	322	350	332	330	338	362
10	331	366	300	313	320	335	317	344	327	325	333
11	300	269	297	243	253	259	271	257	279	265	263
12	281	274	245	271	222	231	237	248	235	255	242
Pre-K - 12 Total	4,505	4,508	4,458	4,474	4,442	4,469	4,481	4,490	4,485	4,495	4,486
Ungraded	21	21	21	21	21	21	21	21	21	21	21
Career Tech Comprehensive - Low Bay	107	101	100	95	88	91	94	94	95	96	94
Career Tech Comprehensive - High Bay	9	9	9	9	8	8	9	8	9	9	8
Career Tech Off-Site	97	86	86	82	76	78	81	80	82	83	80
Career Tech On-Site - Low Bay	83	73	72	69	64	65	68	67	69	69	67
Career Tech On-Site - High Bay	9	8	8	8	7	7	8	8	8	8	8
Grand Total	4,831	4,806	4,754	4,758	4,706	4,739	4,762	4,768	4,769	4,781	4,764

Source: FutureThink

Cuyahoga Falls City School District Projected Enrollment by Grade Group

Grade	2018-19 Actual	2019-20	2020-21	2021-22	2022-23	2023-24	2024-25	2025-26	2026-27	2027-28	2028-29
Pre-K (special needs) - 5	2,257	2,292	2,290	2,289	2,282	2,288	2,285	2,257	2,269	2,259	2,267
6 - 8	965	1,003	1,009	1,033	1,025	1,034	1,021	1,052	1,045	1,053	1,019
9 - 12	1,283	1,213	1,159	1,152	1,135	1,147	1,175	1,181	1,171	1,183	1,200
Pre-K - 12 Total	4,505	4,508	4,458	4,474	4,442	4,469	4,481	4,490	4,485	4,495	4,486
Ungraded	21	21	21	21	21	21	21	21	21	21	21
Career Tech Comprehensive - Low Bay	107	101	100	95	88	91	94	94	95	96	94
Career Tech Comprehensive - High Bay	9	9	9	9	8	8	9	8	9	9	8
Career Tech Off-Site	97	86	86	82	76	78	81	80	82	83	80
Career Tech On-Site - Low Bay	83	73	72	69	64	65	68	67	69	69	67
Career Tech On-Site - High Bay	9	8	8	8	7	7	8	8	8	8	8
Grand Total	4,831	4,806	4,754	4,758	4,706	4,739	4,762	4,768	4,769	4,781	4,764

Source: FutureThink

CONCLUSION

As with any projection, the District should pay close attention to live birth counts, enrollment in elementary schools, community school enrollment, open enrollment, and any housing growth. Each of these factors will have an impact on future student enrollment.

FutureThink is pleased to have had the opportunity to provide the District with enrollment projection services. We hope this document will provide the necessary information to make informed decisions about the future of the Cuyahoga Falls City School District.

APPENDIX

The following documents are included in the appendix:

- District Acceptance
- District Questionnaire

The May 2015 Enrollment Projection Report is available upon request.

Cuyahoga Falls CSD (Summit) REVISED DRAFT Enrollment Projection Report

Nichols, Todd <cf_nichols@cfalls.org>

Wed, Mar 20, 2019 at 4:57 PM

To: Tracy Healy <thealy@futurethinkinc.com>, "Shaw, Christine" <CF_ShawC@cfalls.org>

Cc: "Roka, Steve" <Steve.Roka@ofcc.ohio.gov>, "Drerup, Melanie" <Melanie.Drerup@ofcc.ohio.gov>, "Parker, Janice" <Janice.Parker@ofcc.ohio.gov>, "Prenosil, Bill" <bill.prenosil@ofcc.ohio.gov>, Jeff Tuckerman <jtuckerman@hammondconstruction.com>

Tracy,

I have reviewed the report and it appears to be accurate. Thank you for the update.

Sincerely,

Dr. T. M. Nichols, Superintendent/CEO

Cuyahoga Falls City Schools



From: Tracy Healy [mailto:thealy@futurethinkinc.com]

Sent: Tuesday, March 19, 2019 2:32 PM

To: Nichols, Todd; Shaw, Christine

Cc: Roka, Steve; Drerup, Melanie; Parker, Janice; Prenosil, Bill; Jeff Tuckerman

Subject: Cuyahoga Falls CSD (Summit) REVISED DRAFT Enrollment Projection Report

District Questionnaire for Cuyahoga Falls City of Summit County (43836) [Thealy]

District Questionnaire has been submitted for review

Enrollment Report For Cuyahoga Falls City of Summit County (43836)

Contact Information

Superintendent Name: Todd Nichols
 Superintendent Email: cf_nichols@cfalls.org
 Superintendent Phone: (330) 926-3800
 Contact Name (if different from Superintendent): Christine Shaw
 Contact Title: Student Services Coordinator
 Contact Email: cf_shawc@cfalls.org
 Contact Phone: (330) 926-3800

K12 Enrollment

Grade	Enrolled 2009– 2010	Enrolled 2010– 2011	Enrolled 2011– 2012	Enrolled 2012– 2013	Enrolled 2013– 2014	Enrolled 2014– 2015	Enrolled 2015– 2016	Enrolled 2016– 2017	Enrolled 2017– 2018	Enrolled 2018– 2019
K	366	322	325	384	397	338	388	383	347	368
1	380	379	352	351	390	380	372	388	380	370
2	398	371	375	349	348	369	371	361	382	363
3	351	381	369	383	351	346	377	381	364	389
4	370	351	394	365	376	343	349	377	373	352
5	362	362	362	404	379	387	328	352	362	362
6	403	369	348	365	406	366	390	321	337	334
7	370	402	366	354	362	403	368	387	315	323
8	346	369	406	385	351	359	400	378	383	308
9	416	415	456	505	398	360	360	409	356	371
10	456	379	348	353	418	392	368	370	392	331
11	370	413	375	361	376	433	384	375	413	411
12	376	369	396	382	371	362	415	373	345	383
Ungraded	17	21	21	25	23	26	12	19	24	21
Total	4981	4903	4893	4966	4946	4864	4882	4874	4773	4686

All Day Kindergarten

Do you offer kindergarten to all students, all day, every day?
yes

Preschool Enrollment

Do you **house** Preschool/Pre-K students in your facilities, **including** Pre-K students in a program run by an ESC or other agency?
yes

Please select your district's preschool funding sources:
General Fund Tuition

Early Childhood Education (ECE) grant funding (known as entitlement and public preschool) is distributed by the Ohio Department of Education to districts to provide preschool services for 3- and 4-year old children of income eligible families.

Do you house Early Childhood Education (ECE) students in your facilities?
no

Do you house Pre-K students with disabilities in your facilities?
yes

Please provide enrollment data:

Grade	2009–2010	2010–2011	2011–2012	2012–2013	2013–2014	2014–2015	2015–2016	2016–2017	2017–2018	2018–2019
Pre-K with disabilities	54	56	52	47	49	39	52	57	62	53

Do you house other Pre-K students in your facilities that are not students with disabilities and are not enrolled in ECE, or Federal Head Start (e.g., tuition-based or funded with other sources)?

yes

Please provide enrollment data:

Grade	2009–2010	2010–2011	2011–2012	2012–2013	2013–2014	2014–2015	2015–2016	2016–2017	2017–2018	2018–2019
Pre-K Other (not disabled, not enrolled in ECE, or Federal Head Start)	38	46	36	47	50	58	58	51	62	51

Student Teacher Ratios

What are your district's current average student to teacher ratios for the following grade groups?

Include core teachers only.

- K–3 21 to 1
- 4–5 23 to 1
- 6–8 26 to 1
- 9–12 22 to 1

Grade Configurations

K through 5
6 through 8
9 through 12

Students with Disabilities

Definitions:

- **IE13** — Special Education outside the regular class less than 21% of the day.
- **IE14** — Special Education outside the regular class at least 21% of the day and no more than 60% of the day.
- **IE15** — Special Education outside the regular class more than 60% of the day.

Please provide enrollment for students with disabilities by ODE program code and grade configuration.

Code	K-5	6-8	9-12
IE13	165	104	95
IE14	40	35	88
IE15	22	13	63
Total	227	152	246

*These students should be included in the October headcount

Does your District house additional students with disabilities from other school districts? (i.e., county programs, etc.) no

Community Enrollment

Grade	Enrolled 2009– 2010	Enrolled 2010– 2011	Enrolled 2011– 2012	Enrolled 2012– 2013	Enrolled 2013– 2014	Enrolled 2014– 2015	Enrolled 2015– 2016	Enrolled 2016– 2017	Enrolled 2017– 2018	Enrolled 2018– 2019
PreK	0	0	0	0	0	0	0	0	0	0
K	13	6	8	5	7	7	11	3	5	4
1	7	4	4	11	6	5	5	8	4	4
2	12	6	6	12	10	4	7	5	8	4
3	11	5	6	11	11	11	6	7	4	8
4	7	7	10	9	8	6	6	1	7	7
5	7	3	6	11	8	5	4	5	3	9
6	9	10	8	7	9	10	4	3	5	8
7	12	11	9	14	14	13	12	8	9	9
8	21	11	12	9	12	16	18	12	11	13
9	53	40	25	26	30	31	37	27	28	18
10	64	45	31	32	34	44	35	31	38	30
11	72	59	43	30	41	55	52	54	30	38
12	76	69	48	39	31	34	53	62	59	33
Ungraded	13	11	0	0	0	0	0	3	0	8
Total	377	287	216	216	221	241	250	229	211	193

Open Enrollment (In)

Grade	Enrolled 2009– 2010	Enrolled 2010– 2011	Enrolled 2011– 2012	Enrolled 2012– 2013	Enrolled 2013– 2014	Enrolled 2014– 2015	Enrolled 2015– 2016	Enrolled 2016– 2017	Enrolled 2017– 2018	Enrolled 2018– 2019
Prek	0	0	0	0	0	0	0	0	0	0
K	21	10	20	40	25	26	48	45	42	50
1	14	15	16	24	30	24	35	46	54	45
2	18	19	21	25	28	27	33	32	48	53
3	18	13	23	24	29	29	28	39	36	53
4	22	16	13	25	20	29	35	31	40	39

5	13	16	13	19	24	24	31	38	38	43
6	6	12	15	21	25	29	40	27	41	25
7	9	7	15	23	21	30	33	44	39	39
8	10	9	8	30	19	22	40	33	54	47
9	27	27	21	47	35	33	35	43	38	54
10	41	24	25	42	31	42	45	41	48	42
11	26	39	23	40	37	32	37	41	48	47
12	35	29	44	33	38	38	38	36	38	48
Ungraded	0	0	0	0	0	0	0	3	2	2
Total	260	236	257	393	362	385	478	499	566	587

Open Enrollment (Out)

Grade	Enrolled 2009–2010	Enrolled 2010–2011	Enrolled 2011–2012	Enrolled 2012–2013	Enrolled 2013–2014	Enrolled 2014–2015	Enrolled 2015–2016	Enrolled 2016–2017	Enrolled 2017–2018	Enrolled 2018–2019
Prek	0	0	0	0	0	0	0	0	0	0
K	11	14	13	12	7	5	1	0	5	12
1	15	10	11	13	8	9	12	21	5	19
2	12	10	12	10	15	13	11	12	25	10
3	15	8	8	12	15	15	12	9	13	21
4	15	10	12	10	19	15	15	13	12	18
5	20	11	13	17	16	22	17	18	19	26
6	15	16	15	19	19	17	20	14	25	28
7	14	15	15	15	18	14	16	30	19	33
8	14	19	13	19	18	21	14	15	31	30
9	12	18	13	18	20	24	22	20	20	44
10	12	12	17	14	23	17	26	24	25	31
11	15	14	16	18	18	25	18	28	27	35
12	19	18	19	18	24	22	25	27	32	43
Ungraded	0	0	0	0	0	0	0	1	0	0
Total	189	175	177	195	220	219	209	232	258	350

JVS Enrollment

Does your District belong to a JVSD? no

Career Technical Compact Enrollment

Does your District belong to a Compact? yes

Please select the districts in your compact.

Hudson City

Kent City

Stow-Munroe Falls City School District

Tallmadge City

Woodridge Local

Cuyahoga Falls City

Please provide enrollment for students leaving to attend a career tech program at any of the districts in your compact.

Grade	Enrolled 2009–2010	Enrolled 2010–2011	Enrolled 2011–2012	Enrolled 2012–2013	Enrolled 2013–2014	Enrolled 2014–2015	Enrolled 2015–2016	Enrolled 2016–2017	Enrolled 2017–2018	Enrolled 2018–2019
Off-Site Career Tech 11th	0	32	25	32	33	37	36	23	47	55
Off-Site Career Tech 12th	0	20	6	31	31	34	20	35	41	42
Total	0	52	31	63	64	71	56	58	88	97

Career Tech Program Enrollment

Include only those students who are considered "concentrators" or enrolled in a "pathway". Do NOT include students who are just taking one course.

Comprehensive Career Tech: Students who attend academics and career technical programs in your district.

On-Site Career Tech: Students who attend academics in another district but attend career technical programs in your district.

Satellite JVSD: Same as Comprehensive Career Tech, but the program is sponsored and/or administered by the JVS District and housed by your District.

Do your district's students attend this program in your facilities? If so, please enter the 10-year enrollment numbers for the **M1-Cosmetology-Program Type 4** program. Please use your official October enrollment (as available) to update the table. For years -2--1 and -1- use your enrollment data from the first full week of October.:

Grade	Enrolled 2009– 2010	Enrolled 2010– 2011	Enrolled 2011– 2012	Enrolled 2012– 2013	Enrolled 2013– 2014	Enrolled 2014– 2015	Enrolled 2015– 2016	Enrolled 2016– 2017	Enrolled 2017– 2018	Enrolled 2018– 2019
Comprehensive Career Tech 11	0	15	15	19	18	17	8	9	4	5
Comprehensive Career Tech 12	0	11	14	15	18	10	9	5	3	3
Total	0	26	29	34	36	27	17	14	7	8

Number of sections you offer: 4

Notes: Cosmetology 1 - two courses; 1 course section each Cosmetology 2 - two courses; 1 course section each

Do you have students from outside districts coming to your district **ONLY** to take this career tech program? yes

Please enter the **On-Site** enrollment for the above program in the table below.

Grade	Enrolled 2009– 2010	Enrolled 2010– 2011	Enrolled 2011– 2012	Enrolled 2012– 2013	Enrolled 2013– 2014	Enrolled 2014– 2015	Enrolled 2015– 2016	Enrolled 2016– 2017	Enrolled 2017– 2018	Enrolled 2018– 2019
OnSite Career Tech 11	0	0	0	0	4	8	8	4	11	15
OnSite Career Tech 12	0	0	0	0	9	3	4	8	7	7
Total	0	0	0	0	13	11	12	12	18	22

Do your district's students attend this program in your facilities? If so, please enter the 10-year enrollment numbers for the **N2-Network Systems-Program Type 1** program. Please use your official October enrollment (as available) to update the table. For years -2--1 and -1- use your enrollment data from the first full week of October.:

Grade	Enrolled 2009– 2010	Enrolled 2010– 2011	Enrolled 2011– 2012	Enrolled 2012– 2013	Enrolled 2013– 2014	Enrolled 2014– 2015	Enrolled 2015– 2016	Enrolled 2016– 2017	Enrolled 2017– 2018	Enrolled 2018– 2019
Comprehensive Career Tech 11	0	0	15	4	11	18	4	6	3	4
Comprehensive Career Tech 12	0	0	10	12	11	14	3	4	5	3
Total	0	0	25	16	22	32	7	10	8	7

Number of sections you offer: 4

Notes: Networking 1 - two courses; 1 course section each Networking 2 - two courses; 1 course section each

Do you have students from outside districts coming to your district **ONLY** to take this career tech program? yes
Please enter the **On-Site** enrollment for the above program in the table below.

Grade	Enrolled 2009– 2010	Enrolled 2010– 2011	Enrolled 2011– 2012	Enrolled 2012– 2013	Enrolled 2013– 2014	Enrolled 2014– 2015	Enrolled 2015– 2016	Enrolled 2016– 2017	Enrolled 2017– 2018	Enrolled 2018– 2019
OnSite Career Tech 11	0	0	0	0	7	17	12	7	15	19
OnSite Career Tech 12	0	0	0	0	4	12	12	12	7	12
Total	0	0	0	0	11	29	24	19	22	31

Do your district's students attend this program in your facilities? If so, please enter the 10-year enrollment numbers for the **S3-Marketing Communications-Program Type 3** program. Please use your official October enrollment (as available) to update the table. For years -2- -1 and -1- use your enrollment data from the first full week of October.:

Grade	Enrolled 2009– 2010	Enrolled 2010– 2011	Enrolled 2011– 2012	Enrolled 2012– 2013	Enrolled 2013– 2014	Enrolled 2014– 2015	Enrolled 2015– 2016	Enrolled 2016– 2017	Enrolled 2017– 2018	Enrolled 2018– 2019
Comprehensive Career Tech 11	0	0	20	11	16	18	0	0	0	0
Comprehensive Career Tech 12	0	0	20	11	16	18	12	0	0	0
Total	0	0	40	22	32	36	12	0	0	0

Number of sections you offer: 2 Notes: Marketing Management 2 - 2 courses; 1 course section each

Do you have students from outside districts coming to your district **ONLY** to take this career tech program? yes
Please enter the **On-Site** enrollment for the above program in the table below.

Grade	Enrolled 2009– 2010	Enrolled 2010– 2011	Enrolled 2011– 2012	Enrolled 2012– 2013	Enrolled 2013– 2014	Enrolled 2014– 2015	Enrolled 2015– 2016	Enrolled 2016– 2017	Enrolled 2017– 2018	Enrolled 2018– 2019
OnSite Career Tech 11	0	0	0	0	0	1	0	0	0	0
OnSite Career Tech 12	0	0	0	0	2	1	1	0	0	0
Total	0	0	0	0	2	2	1	0	0	0

Do your district's students attend this program in your facilities? If so, please enter the 10-year enrollment numbers for the **S4-Marketing Management-Program Type 3** program. Please use your official October enrollment (as available) to update the table. For years -2--1 and -1- use your enrollment data from the first full week of October.:

Grade	Enrolled 2009– 2010	Enrolled 2010– 2011	Enrolled 2011– 2012	Enrolled 2012– 2013	Enrolled 2013– 2014	Enrolled 2014– 2015	Enrolled 2015– 2016	Enrolled 2016– 2017	Enrolled 2017– 2018	Enrolled 2018– 2019
Comprehensive Career Tech 11	0	0	20	18	20	18	17	12	9	16
Comprehensive Career Tech 12	0	0	12	18	18	18	17	18	17	9
Total	0	0	32	36	38	36	34	30	26	25

Number of sections you offer: 4

Notes: Interactive Marketing 1 - 2 courses; 1 course section each Interactive Marketing 2 - 2 courses: 1 course section each

Do you have students from outside districts coming to your district **ONLY** to take this career tech program? yes

Please enter the **On-Site** enrollment for the above program in the table below.

Grade	Enrolled 2009– 2010	Enrolled 2010– 2011	Enrolled 2011– 2012	Enrolled 2012– 2013	Enrolled 2013– 2014	Enrolled 2014– 2015	Enrolled 2015– 2016	Enrolled 2016– 2017	Enrolled 2017– 2018	Enrolled 2018– 2019
OnSite Career Tech 11	0	0	0	0	1	1	3	2	5	2
OnSite Career Tech 12	0	0	0	0	0	1	1	2	2	3
Total	0	0	0	0	1	2	4	4	7	5

Do your district's students attend this program in your facilities? If so, please enter the 10-year enrollment numbers for the **P1-Criminal Justice-Program Type 4** program. Please use your official October enrollment (as available) to update the table. For years -2--1 and -1- use your enrollment data from the first full week of October.:

Grade	Enrolled 2009– 2010	Enrolled 2010– 2011	Enrolled 2011– 2012	Enrolled 2012– 2013	Enrolled 2013– 2014	Enrolled 2014– 2015	Enrolled 2015– 2016	Enrolled 2016– 2017	Enrolled 2017– 2018	Enrolled 2018– 2019
Comprehensive Career Tech 11	0	0	0	0	0	0	8	3	7	4
Comprehensive Career Tech 12	0	0	0	0	0	0	1	3	2	6
Total	0	0	0	0	0	0	9	6	9	10

Number of sections you offer: 4

Notes: Criminal Justice 1 - 2 courses; 1 course section each Criminal Justice 2 - 2 courses: 1 course section each

Do you have students from outside districts coming to your district **ONLY** to take this career tech program? yes

Please enter the **On-Site** enrollment for the above program in the table below.

Grade	Enrolled 2009– 2010	Enrolled 2010– 2011	Enrolled 2011– 2012	Enrolled 2012– 2013	Enrolled 2013– 2014	Enrolled 2014– 2015	Enrolled 2015– 2016	Enrolled 2016– 2017	Enrolled 2017– 2018	Enrolled 2018– 2019
OnSite Career Tech 11	0	0	0	0	0	0	6	13	10	7
OnSite Career Tech 12	0	0	0	0	0	0	0	6	10	6
Total	0	0	0	0	0	0	6	19	20	13

Do your district's students attend this program in your facilities? If so, please enter the 10-year enrollment numbers for the **T9-Ground Transportation-Program Type 6** program. Please use your official October enrollment (as available) to update the table. For years -2--1 and -1- use your enrollment data from the first full week of October.:

Grade	Enrolled 2009–2010	Enrolled 2010–2011	Enrolled 2011–2012	Enrolled 2012–2013	Enrolled 2013–2014	Enrolled 2014–2015	Enrolled 2015–2016	Enrolled 2016–2017	Enrolled 2017–2018	Enrolled 2018–2019
Comprehensive Career Tech 11	0	0	0	0	0	0	6	4	6	4
Comprehensive Career Tech 12	0	0	0	0	0	0	5	4	5	5
Total	0	0	0	0	0	0	11	8	11	9

Number of sections you offer: 4 Notes: Auto Tech 1 - 2 courses; 1 course section each Auto Tech 2 - 2 courses: 1 course section each

Do you have students from outside districts coming to your district **ONLY** to take this career tech program? yes
Please enter the **On-Site** enrollment for the above program in the table below.

Grade	Enrolled 2009–2010	Enrolled 2010–2011	Enrolled 2011–2012	Enrolled 2012–2013	Enrolled 2013–2014	Enrolled 2014–2015	Enrolled 2015–2016	Enrolled 2016–2017	Enrolled 2017–2018	Enrolled 2018–2019
OnSite Career Tech 11	0	0	0	0	0	0	7	3	5	5
OnSite Career Tech 12	0	0	0	0	0	0	3	7	1	4
Total	0	0	0	0	0	0	10	10	6	9

Do your district's students attend this program in your facilities? If so, please enter the 10-year enrollment numbers for the **C4-Business and Administrative Services-Program Type 1** program. Please use your official October enrollment (as available) to update the table. For years -2--1 and -1- use your enrollment data from the first full week of October.:

Grade	Enrolled 2009–2010	Enrolled 2010–2011	Enrolled 2011–2012	Enrolled 2012–2013	Enrolled 2013–2014	Enrolled 2014–2015	Enrolled 2015–2016	Enrolled 2016–2017	Enrolled 2017–2018	Enrolled 2018–2019
Comprehensive Career Tech 11	0	0	0	0	0	0	14	12	13	23
Comprehensive Career Tech 12	0	0	0	0	0	0	3	9	8	34
Total	0	0	0	0	0	0	17	21	21	57

Number of sections you offer: 8 Notes: Career Pathway - consists of 6 different courses

Do you have students from outside districts coming to your district **ONLY** to take this career tech program? yes
Please enter the **On-Site** enrollment for the above program in the table below.

Grade	Enrolled 2009–2010	Enrolled 2010–2011	Enrolled 2011–2012	Enrolled 2012–2013	Enrolled 2013–2014	Enrolled 2014–2015	Enrolled 2015–2016	Enrolled 2016–2017	Enrolled 2017–2018	Enrolled 2018–2019
OnSite Career Tech 11	0	0	0	0	0	0	2	2	4	4
OnSite Career Tech 12	0	0	0	0	0	0	1	2	1	8
Total	0	0	0	0	0	0	3	4	5	12

Boundaries

Please list municipalities, townships, and any additional counties within the boundaries of your school district: Local Municipalities:
Cuyahoga Falls and Silver Lake County: Summit

Has your District experienced changes in District-wide boundaries since 2004? yes

Redistricting of several buildings' boundaries. Within Cuyahoga Falls only.

Growth

Do you expect significant growth in your District over the next 10 years? no

Additional Information

Please provide any additional information you feel may impact your District's future enrollment [i.e. private schools opening or closing]

Submission Documents

The following are additional documents which may be useful in projecting your District's enrollment. Please check any documents you intend to provide for consideration and forward documents to:

Tracy Healy (thealy@futurethinkinc.com)

or

Future Think Inc.

5685 Tynecastle Loop

Dublin, 43016

Return To District Print Report

Please contact Tracy Healy (thealy@futurethinkinc.com, 614-264-2638) with any questions or concerns regarding the District Questionnaire.